

This map was prepared for Assessment & Taxation purposes only and was NOT prepared nor is it suitable for legal, engineering or surveying purposes.

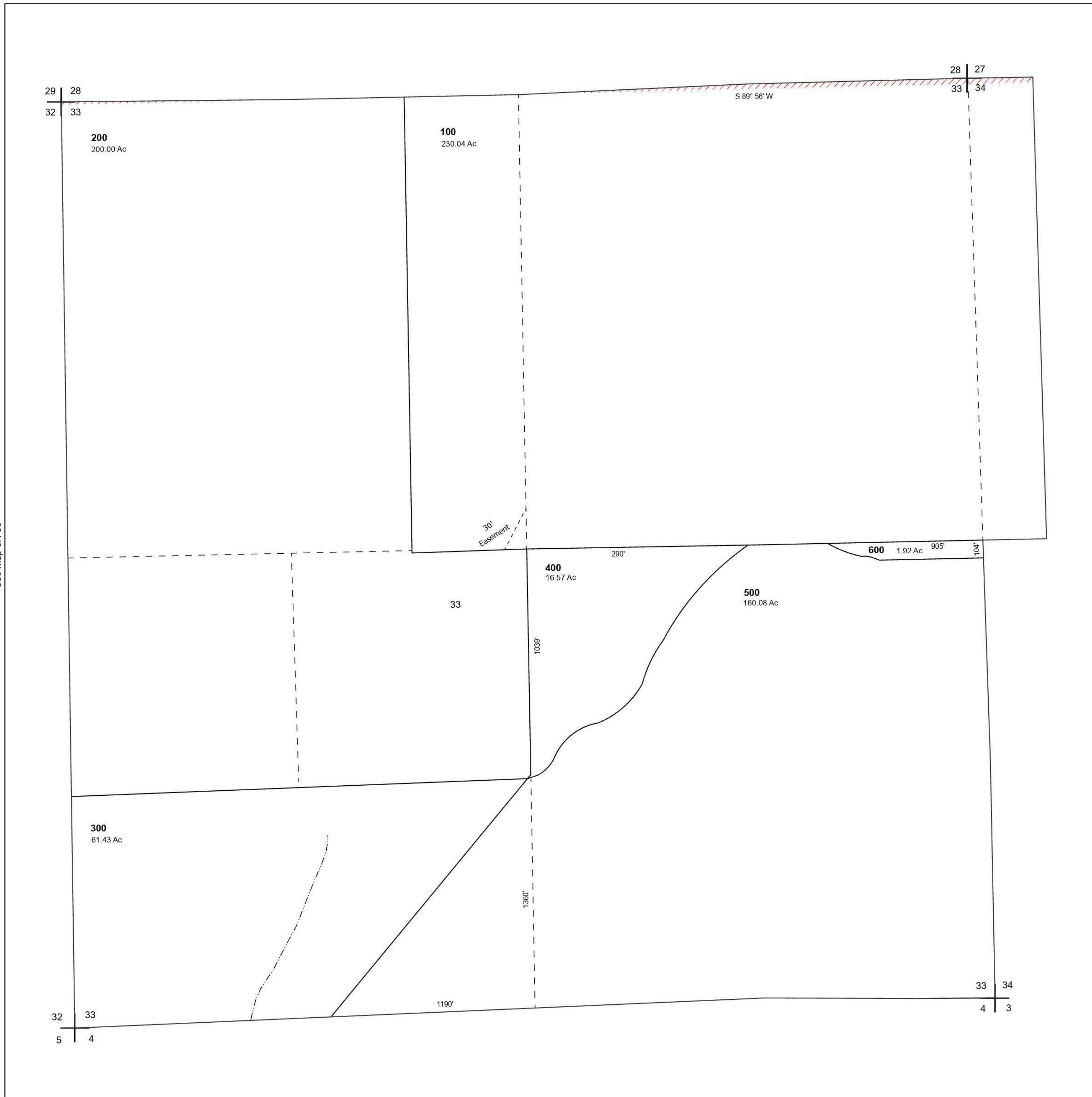
Cancelled Tax Lots:

SEC 33 T5N R33E WM UMATILLA COUNTY

5N 33 33

SCALE 1" = 400'

See Map 5N 33



See Map 5N 33

See Map 5N 33

Revised 11/13/2023

See Map 4N 33

5N 33 33