

This map was prepared for Assessment & Taxation purposes only and was NOT prepared nor is it suitable for legal, engineering or surveying purposes.

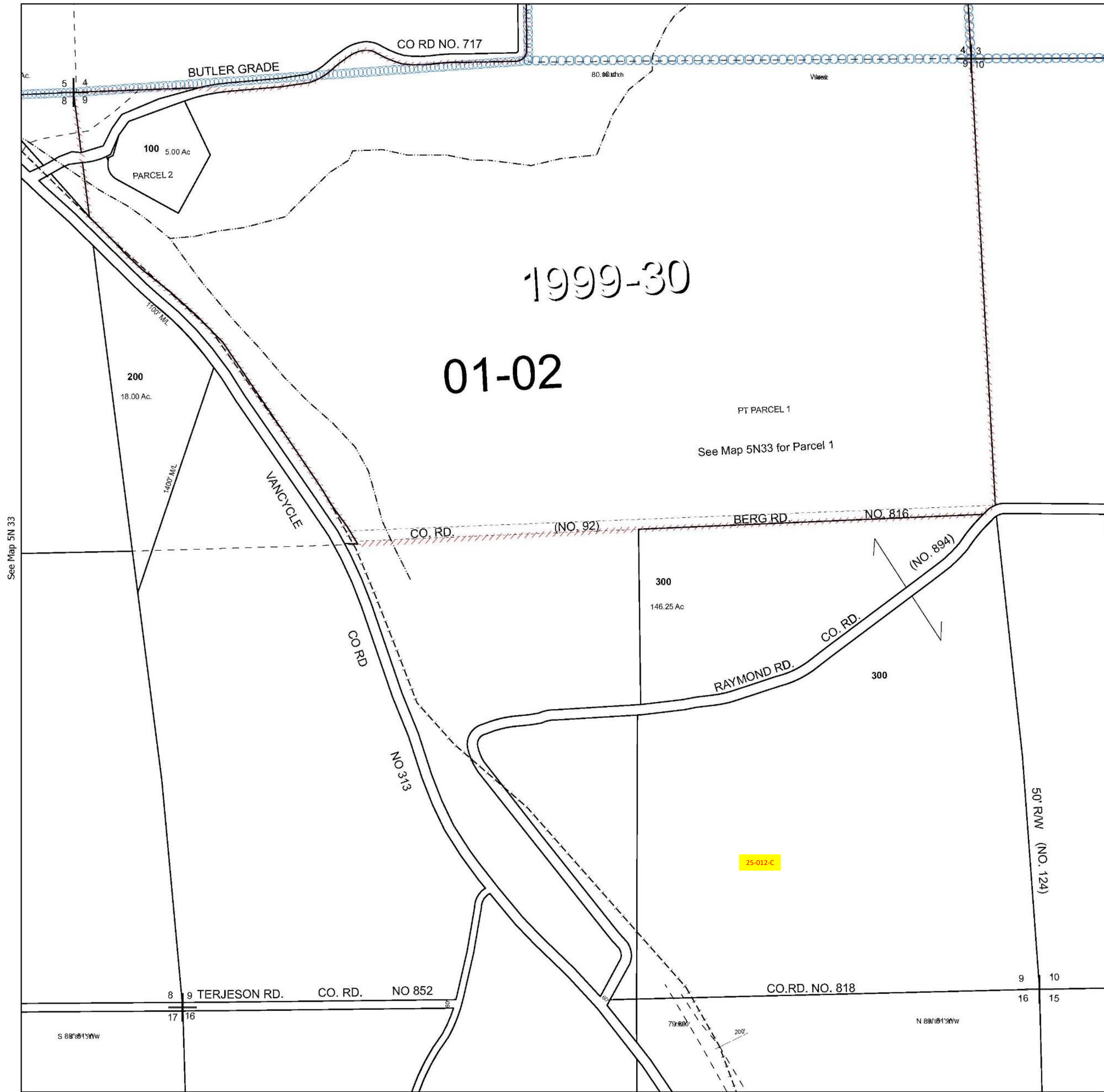
Cancelled Tax Lots

SEC 09 T5N R33E WM UMATILLA COUNTY

5N 33 09

SCALE 1" = 400'

See Map 5N 33



See Map 5N 33

See Map 5N 33

Revised 9/17/2024

See Map 5N 33

5N 33 09