

ALSO SEE SURVEYS 03-023-C, 12-029-C, CORNER RECORDS; G.L.O. SURVEYS

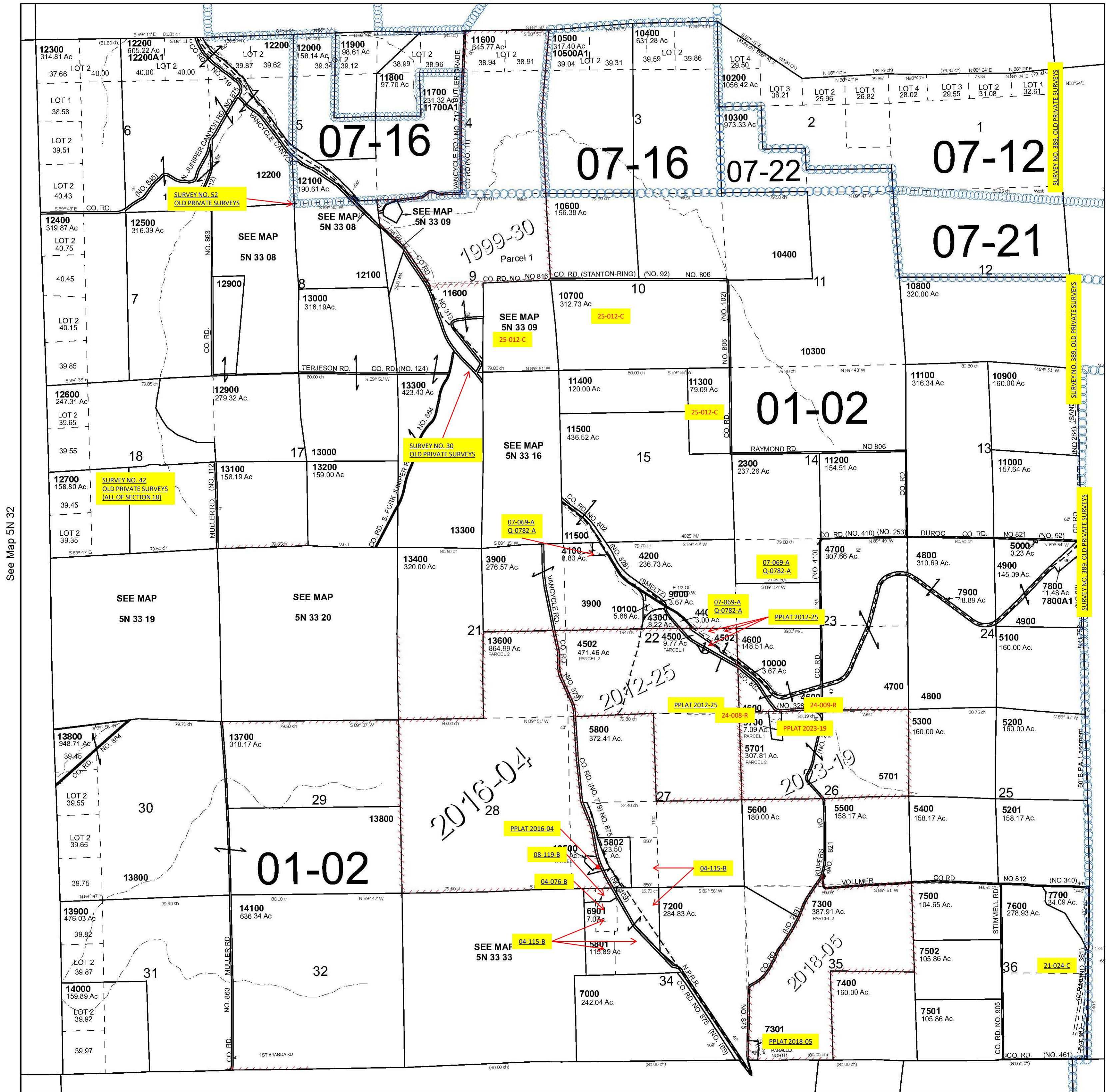
This map was prepared for Assessment & Taxation purposes only and was NOT prepared nor is it suitable for legal, engineering or surveying purposes.

T5N R33E WM UMATILLA COUNTY SCALE 1" = 2,000'

5N 33

Cancelled Tax Lots	
100	6900
2200	6902
2400	7100
3800	7200
4000	7502
4100	7801A1
4501	8000
4800	
5803	
5900	

See Map 6N 33



See Map 5N 32

See Map 5N 34

Revised 9/16/2024

See Map 4N 33

5N 33