

This map was prepared for Assessment & Taxation purposes only and was NOT prepared nor is it suitable for legal, engineering or surveying purposes.

# SW1/4 SE 1/4 SEC 32 T5NR29E WM UMATILLA COUNTY

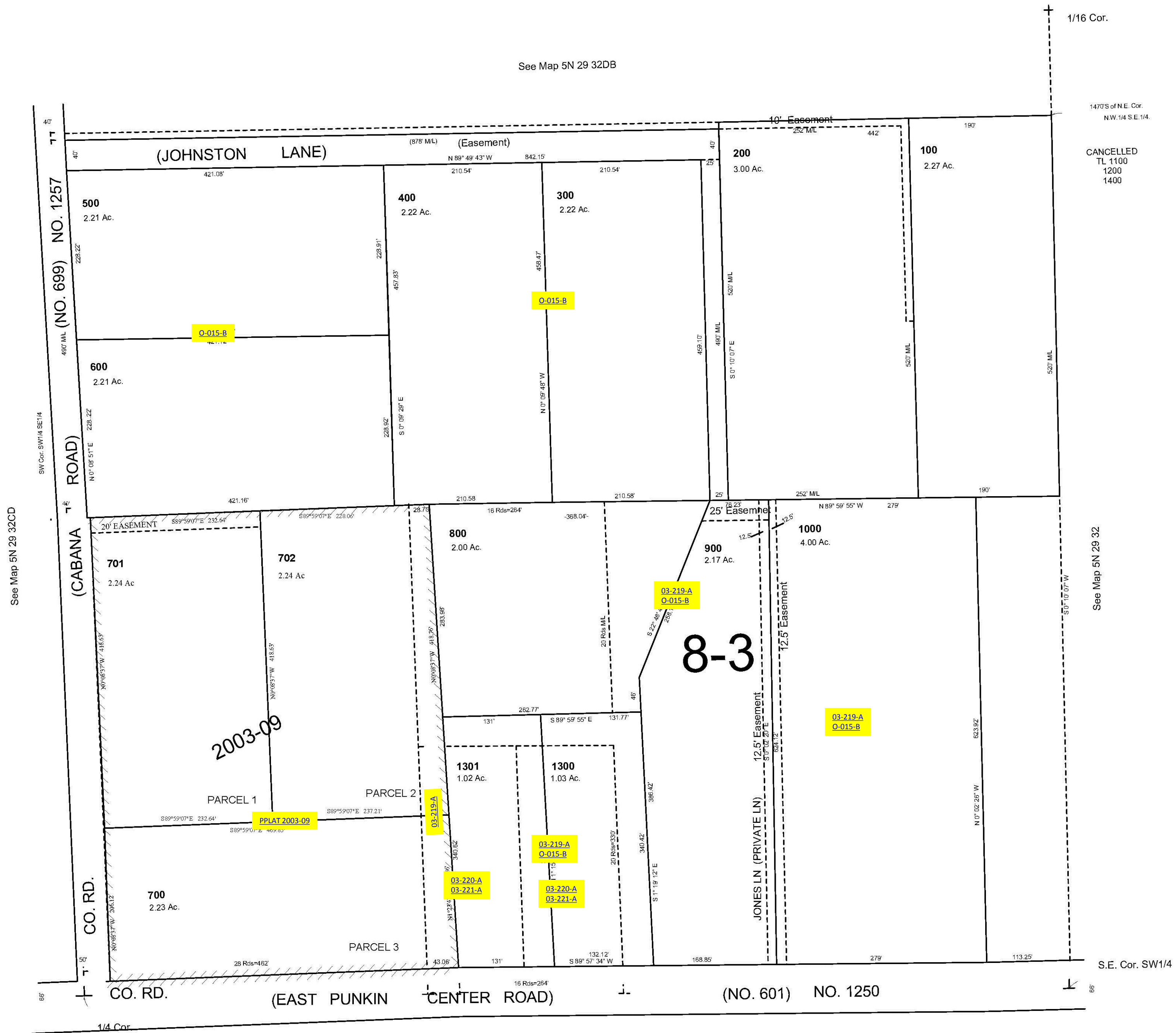
Revised: 2/13/09

## 5N2932DC

AERIAL PHOTO NO 1P-99

SCALE 1"=100'

See Map 5N 29 32DB



## 5N2932DC