

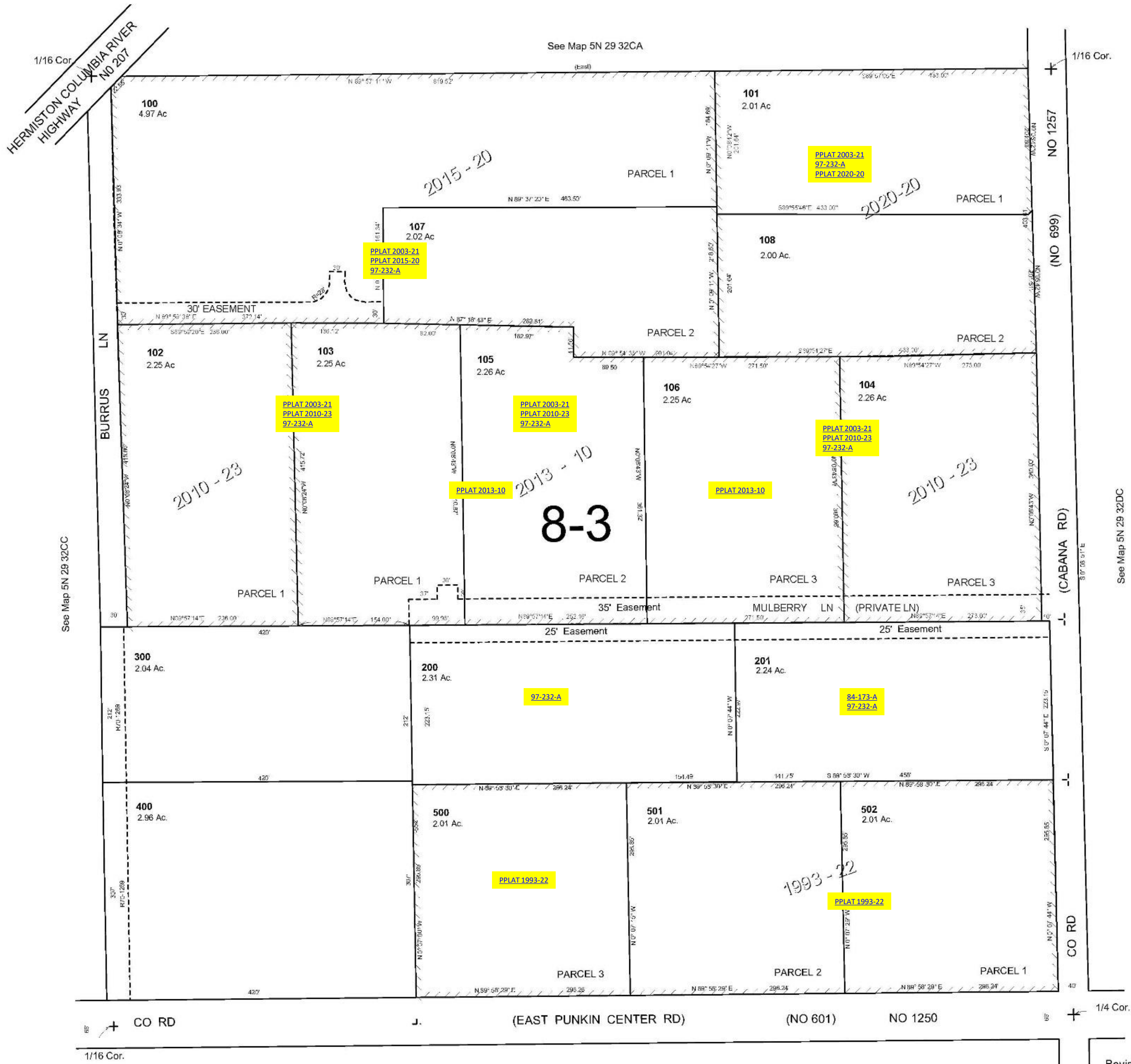
ALSO SEE SURVEYS 11-035-A, 11-037-C

This map was prepared for Assessment & Taxation purposes only and was NOT prepared nor is it suitable for legal, engineering or surveying purposes.

SE1/4 SW1/4 SEC 32 T5NR29E WM UMATILLA COUNTY

SCALE 1"=100'

5N 29 32CD



Revised: 10-21-2020

5N 29 32CD