

ALSO SEE SURVEYS 11-035-A, 11-037-C

This map was prepared for assessment purposes

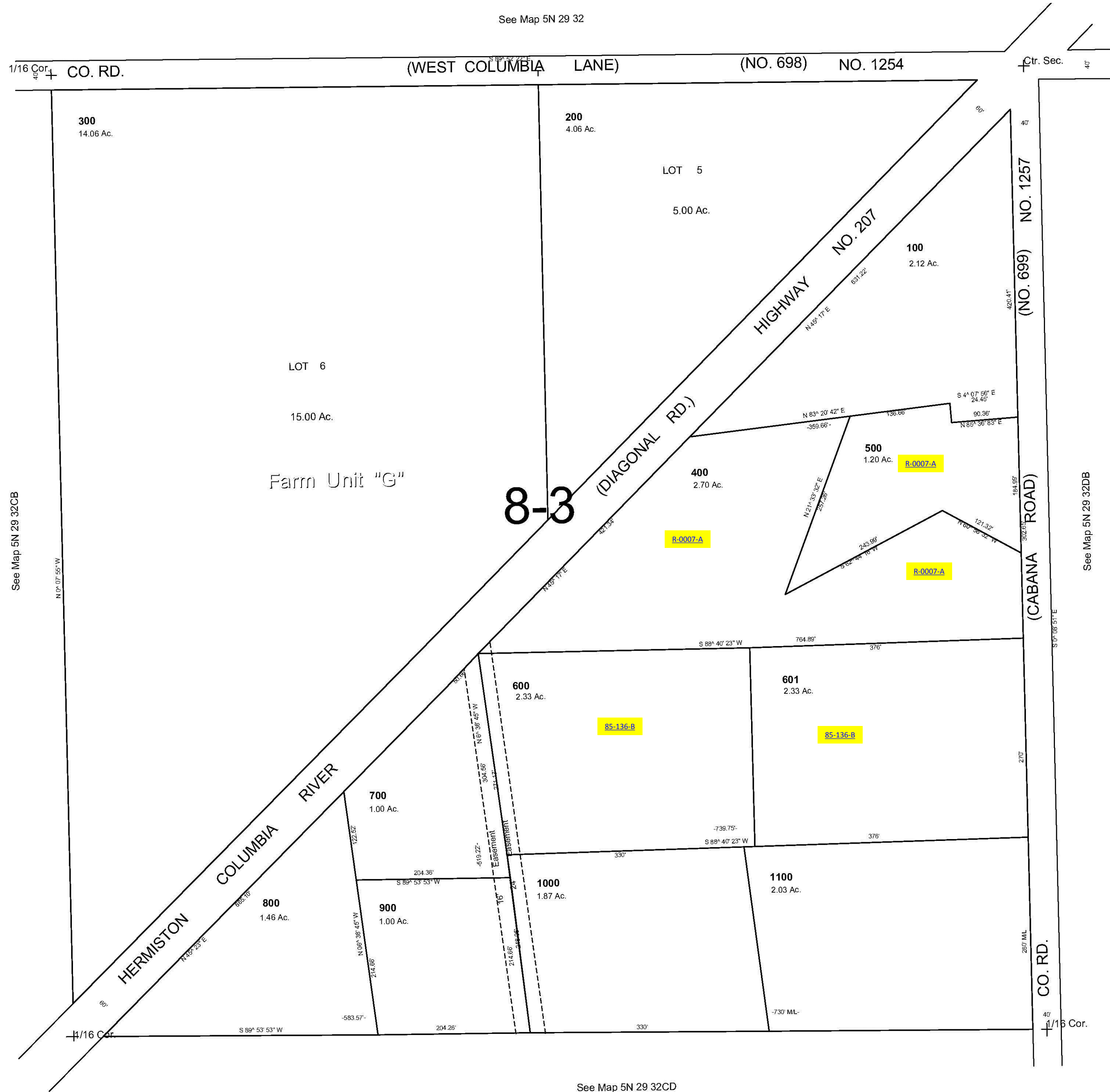
NE1/4 SW1/4 SEC 32 T5N R28E WM
UMATILLA COUNTY
SCALE 1"=100'

4-6-06

5N 29 32CA

AERIAL PHOTO NO. 1P-100

See Map 5N 29 32



5N 29 32CA