

This map was prepared for Assessment & Taxation purposes only and was NOT prepared nor is it suitable for legal, engineering or surveying purposes.

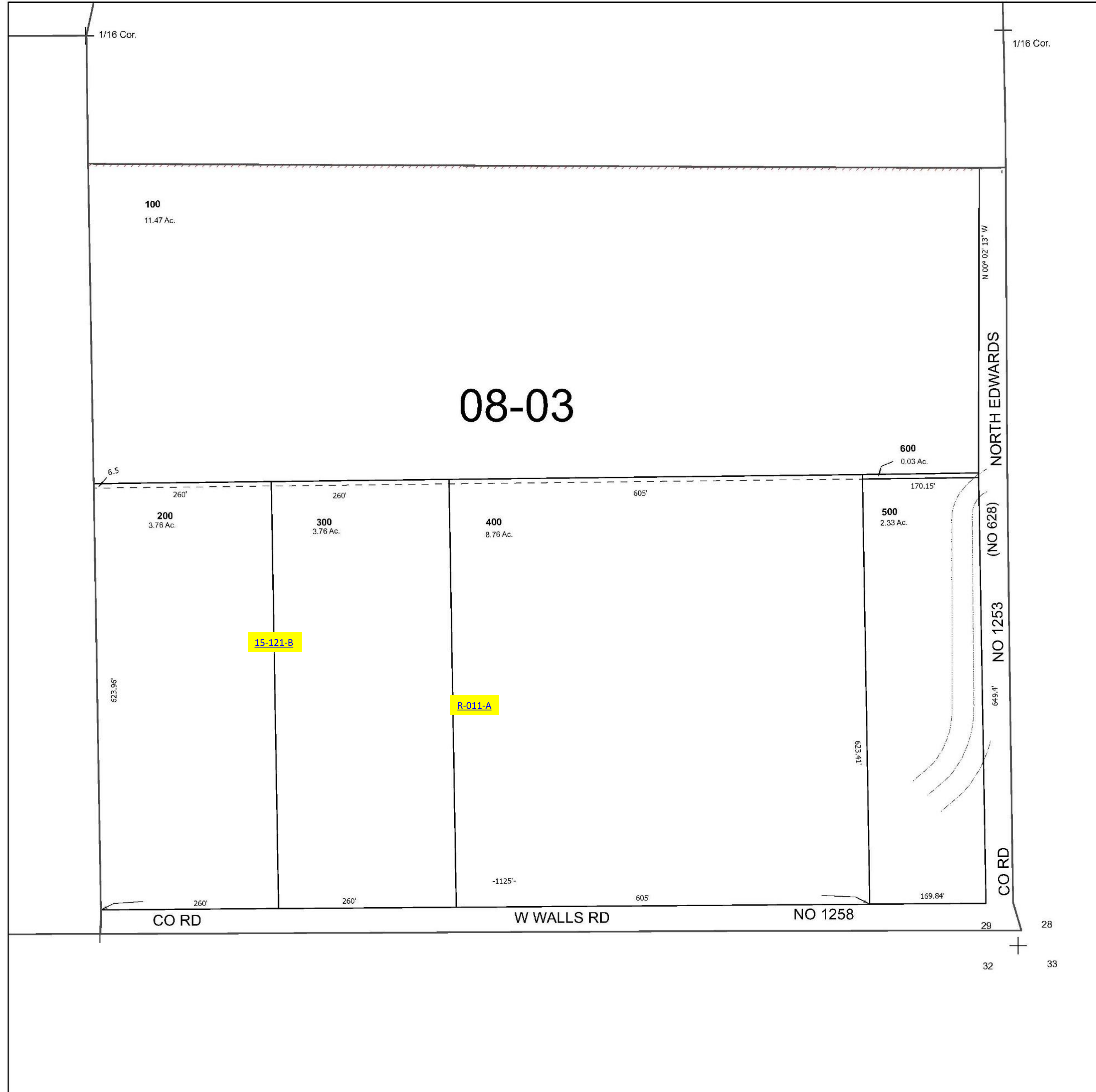
Cancelled Tax Lots

SE 1/4 SE 1/4 SEC 29 T5N R29E WM UMATILLA COUNTY

SCALE 1" = 100'

See Map 5N 29 29DA

5N 29 29DD



See Map 5N 29 29DC

See Map 5N 29 29C

Revised 2/28/2025

See Map 5N 29 32

5N 29 29DD