

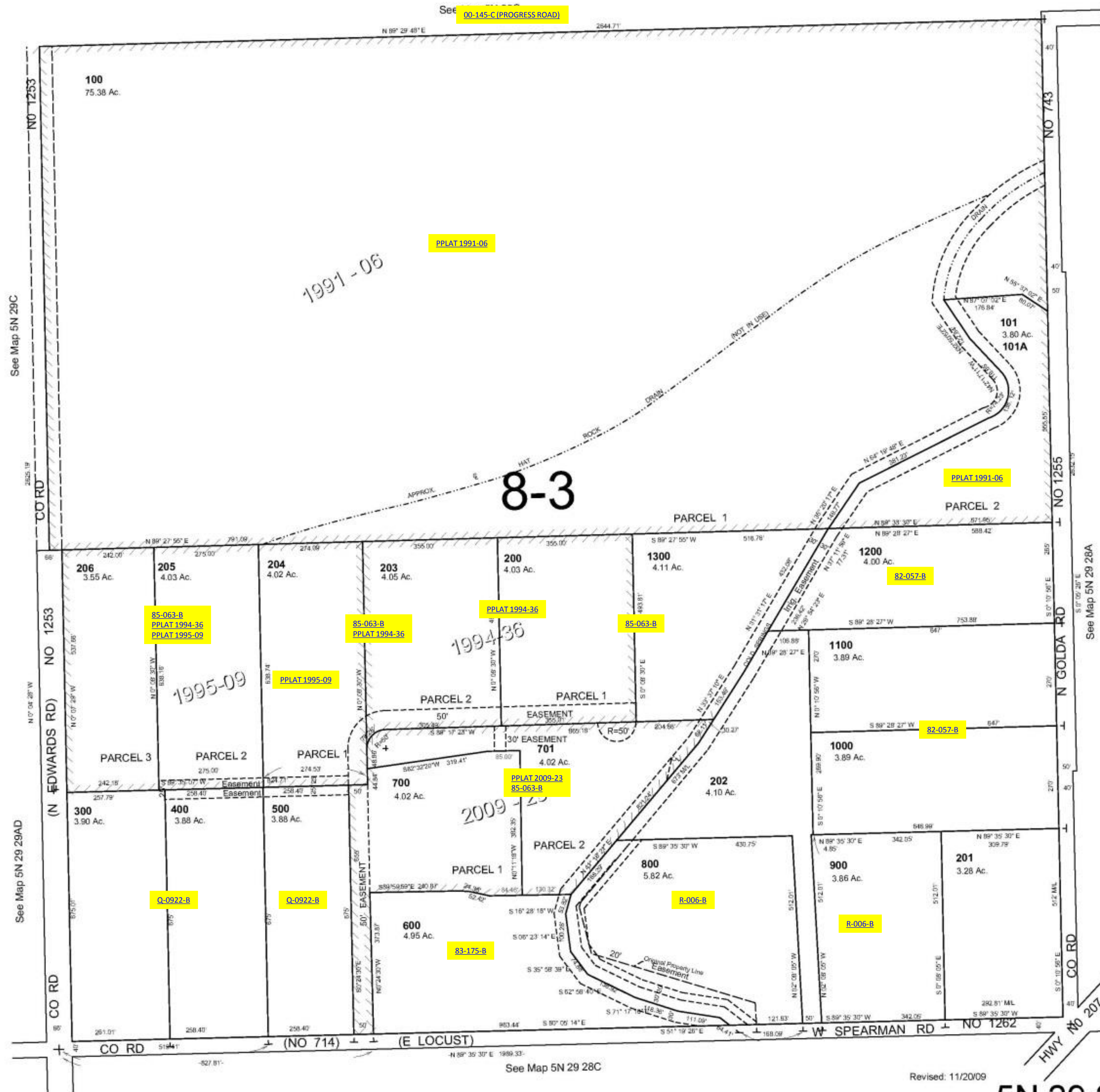
ALSO SEE SURVEYS 06-265-C, 07-074-C, 91-058-B; CORNER RECORDS; G.L.O. SURVEYS

This map was prepared for Assessment & Taxation purposes only and was NOT prepared nor is it suitable for legal, engineering or surveying purposes.

NW1/4 SEC 28 T5N R29E WM UMATILLA COUNTY

SCALE 1"=200'

5N 29 28B



Revised: 11/20/09

5N 29 28B