

ALSO SEE SURVEYS 02-019-G, 06-265-C, 07-074-C; CORNER RECORDS; G.L.O. SURVEYS

This map was prepared for Assessment & Taxation purposes only and was NOT prepared nor is it suitable for legal, engineering or surveying purposes.

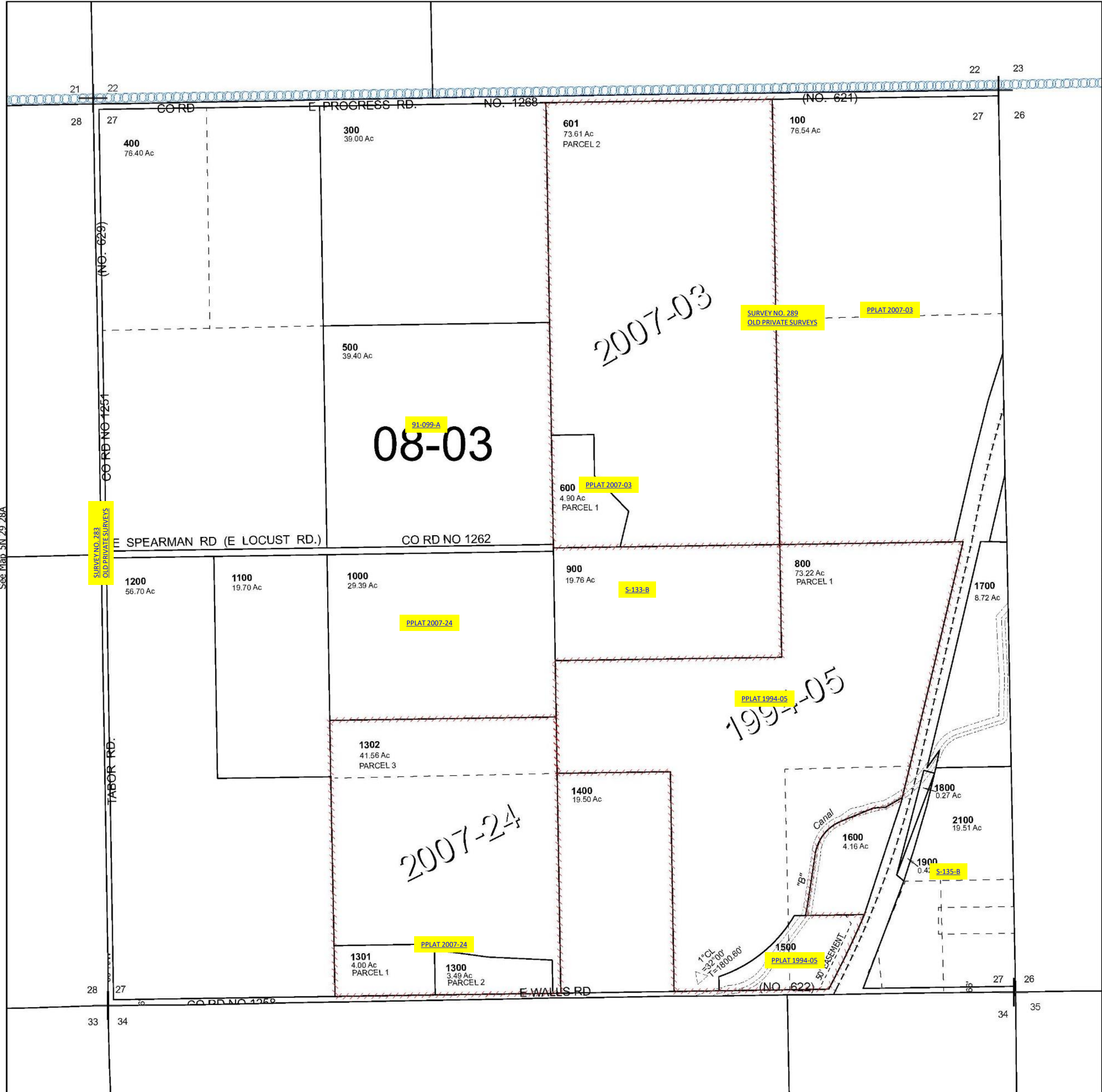
Cancelled Tax Lots
200
2000
2200
2100A1

SEC 27 T5N R29E WM UMATILLA COUNTY

5N 29 27

SCALE 1" = 400'

See Map 5N 29



See Map 5N 29 28A

See Map 5N 29

Revised 8/9/2024

See Map 5N 29 34

5N 29 27