

This map was prepared for Assessment & Taxation purposes only and was NOT prepared nor is it suitable for legal, engineering or surveying purposes.

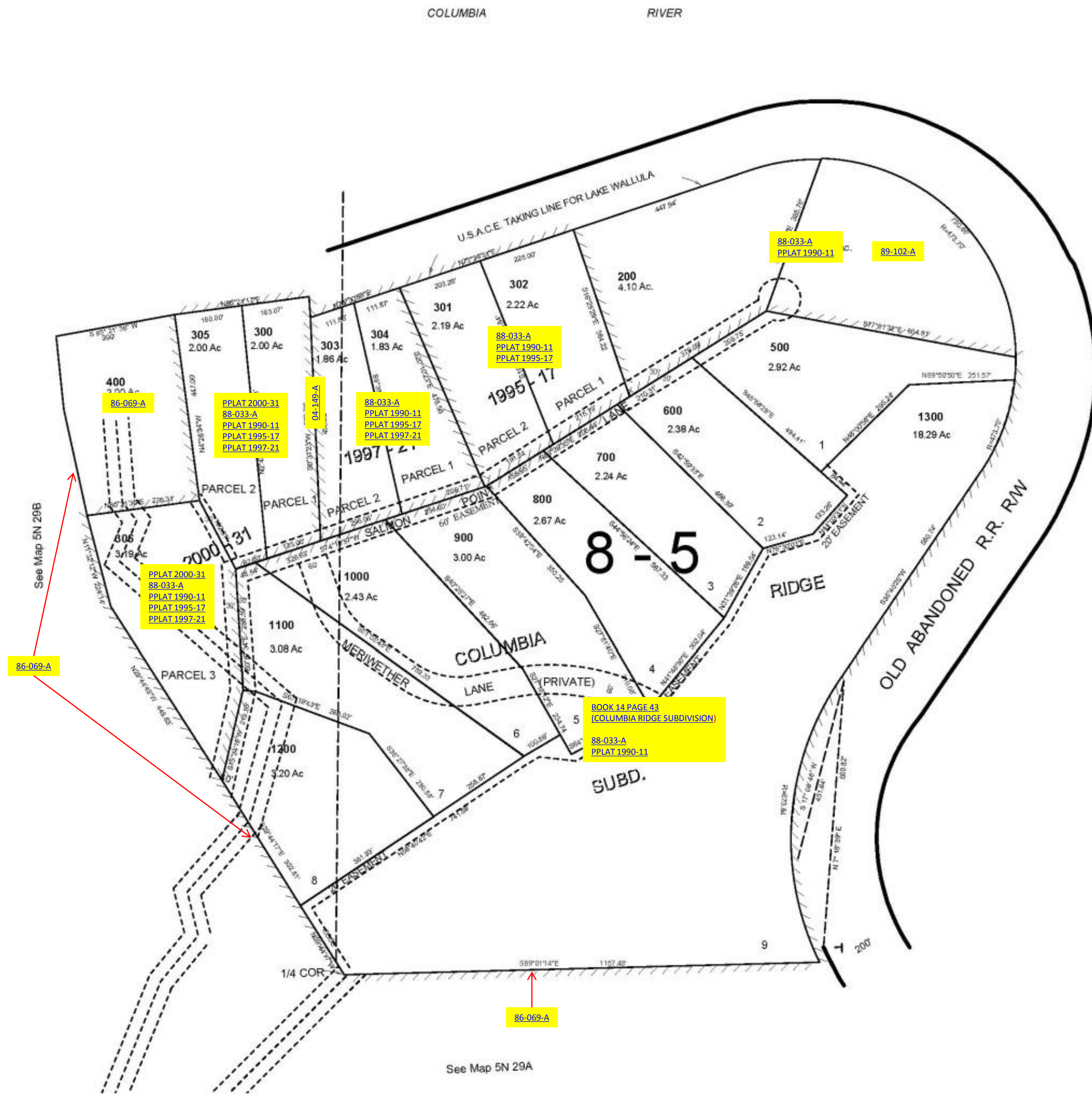


NW1/4 SEC 15 T5N R29 EWM UMATILLA COUNTY

5N2915B

AERIAL PHOTO NO 1P-64

SCALE: 1" = 200



See Map 5N 29A