

ALSO SEE SURVEYS 82-035-A, 07-074-C, 88-027-B, H-256-C, S-020-AX, S-156-C; CORNER RECORDS; G.L.O. SURVEYS

This map was prepared for assessment purposes

SE1/4 SEC 35 T5N R28E WM UMATILLA COUNTY SCALE 1"=200'

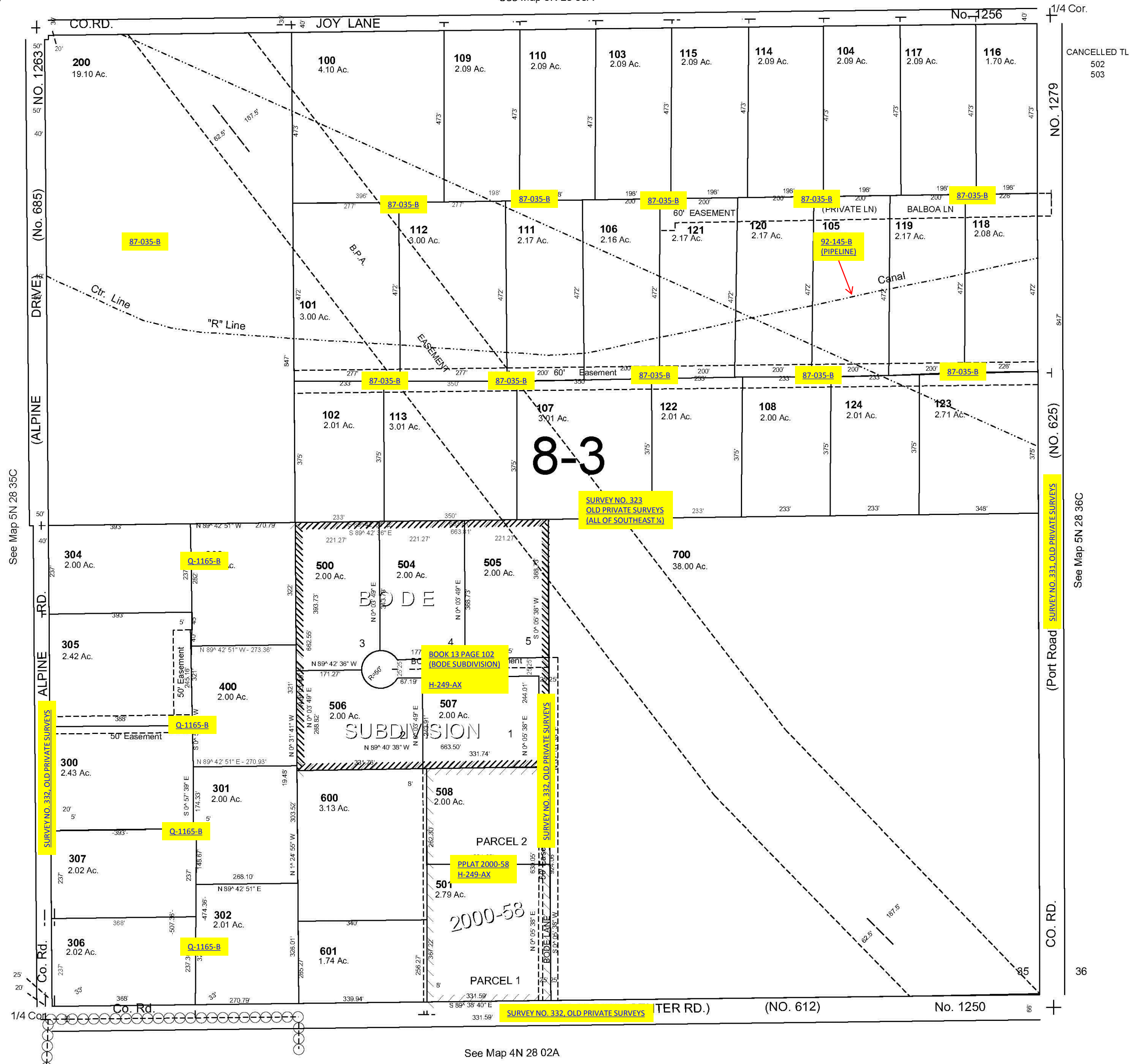
REVISED: 12/17/08

5N 28 35D

AERIAL PHOTO NO. 1P-103

Ctr. Sec.

See Map 5N 28 35A



5N 28 35D