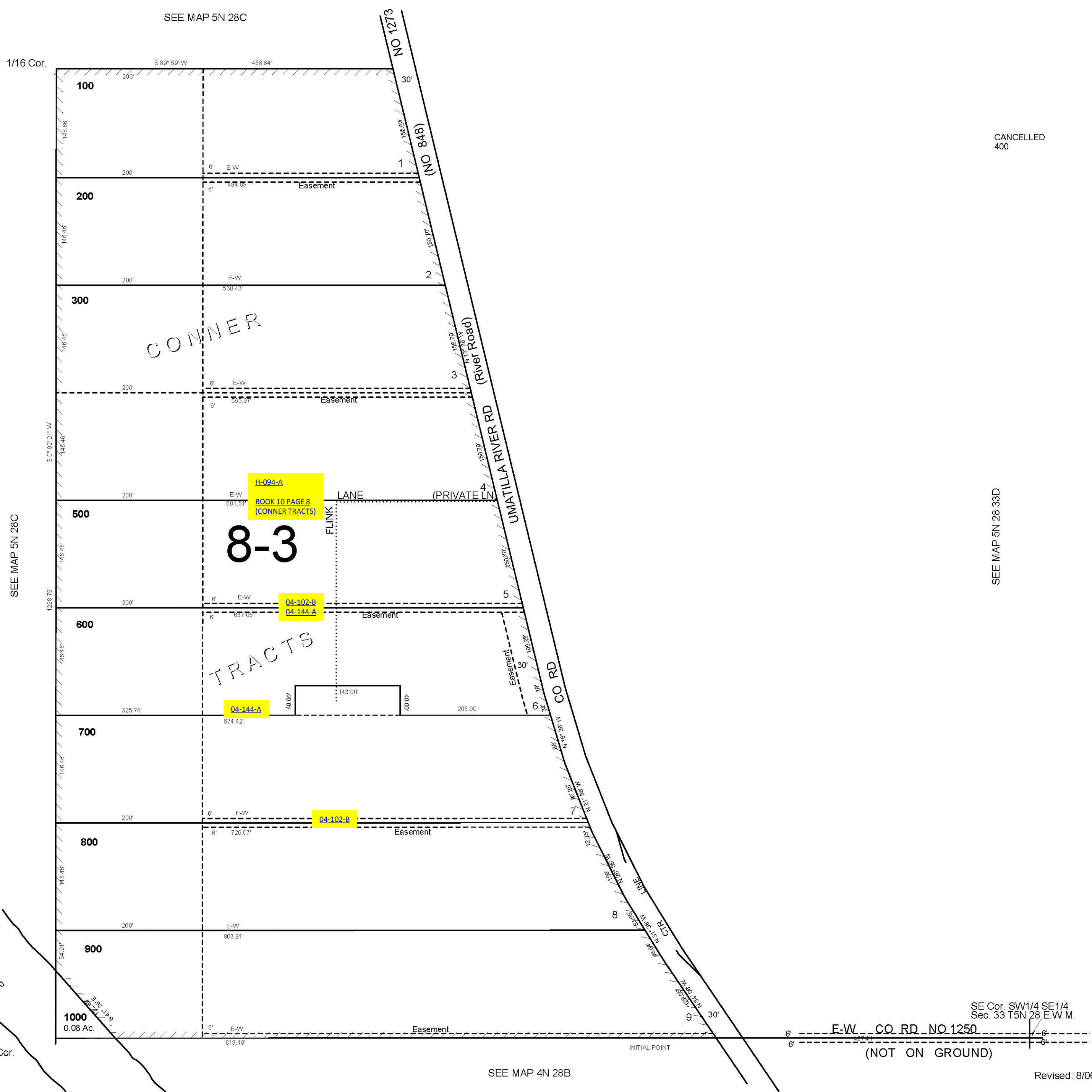


This map was prepared for Assessment & Taxation purposes only and was NOT prepared nor is it suitable for legal, engineering or surveying purposes.

SW1/4 SE1/4 SEC 33 T5NR28E WM UMATILLA COUNTY

1"=100'

5N2833DC
AERIAL PHOTO NO: NZ-1P-105



5N2833DC