

ALSO SEE SURVEYS 07-074-C, 09-040-A, 91-001-B, 94-171-G, I-016-C, CORNER RECORDS; G.L.O. SURVEYS

This map was prepared for assessment purposes

NE1/4 SEC 33 T5N R28E WM UMATILLA COUNTY SCALE 1"=200'

9/25/06

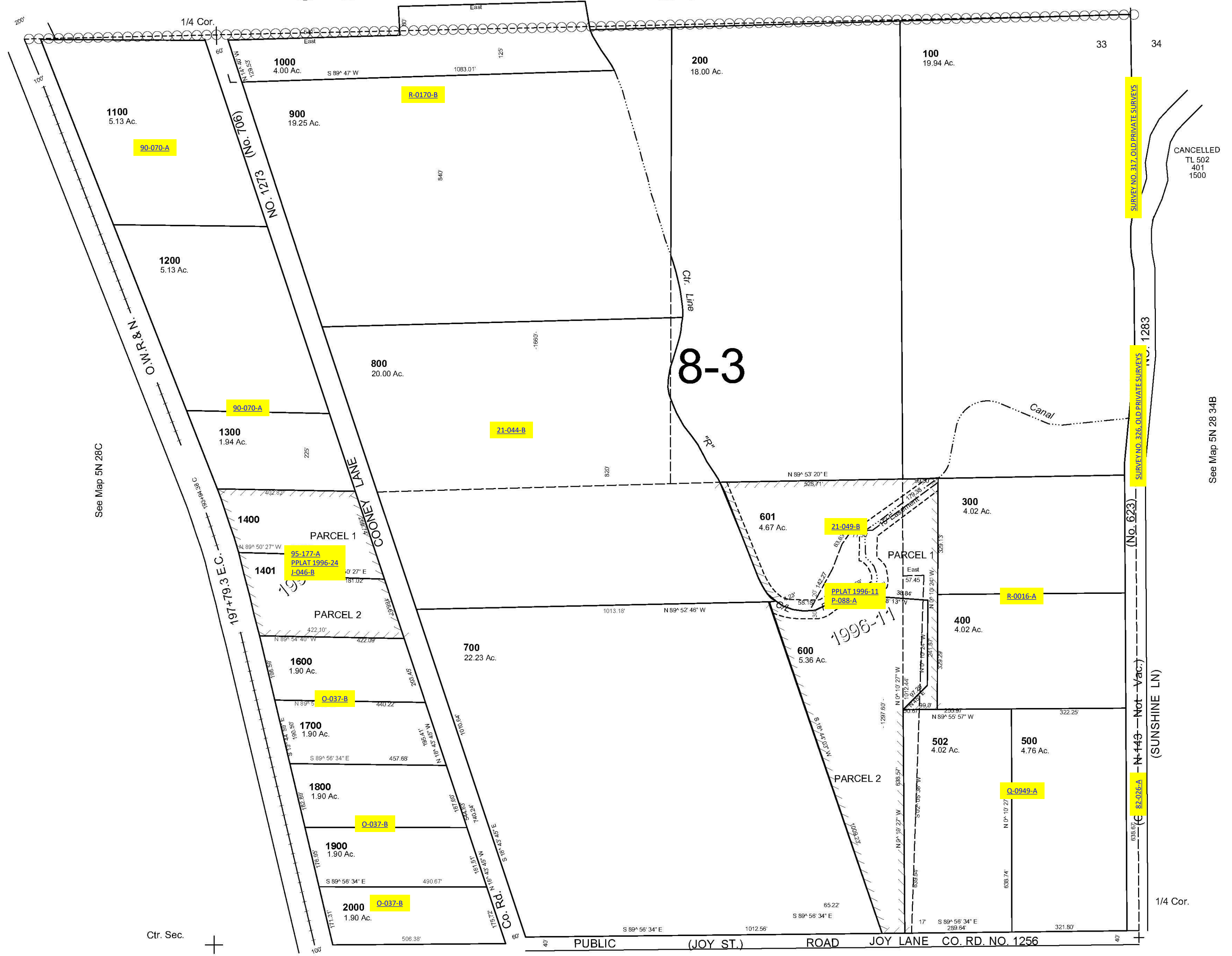
5N 28 33A

AERIAL PHOTO NO. 1P-105

6-3

See Map 5N 28 28D

28 27



CANCELLED
TL 502
401
1500

SURVEY NO. 317, OLD PRIVATE SURVEYS

SURVEY NO. 376, OLD PRIVATE SURVEYS

(No. 523)

(No. 443 - Not Vac.)

(No. 82,076-A)

(No. 1283)

See Map 5N 28 34B

See Map 5N 28C

Ctr. Sec.

See Map 4N 28 33D

5N 28 33A