

This map was prepared for Assessment & Taxation purposes only and was NOT prepared nor is it suitable for legal, engineering or surveying purposes.

# SEC 20 T5N R28E WM UMATILLA COUNTY

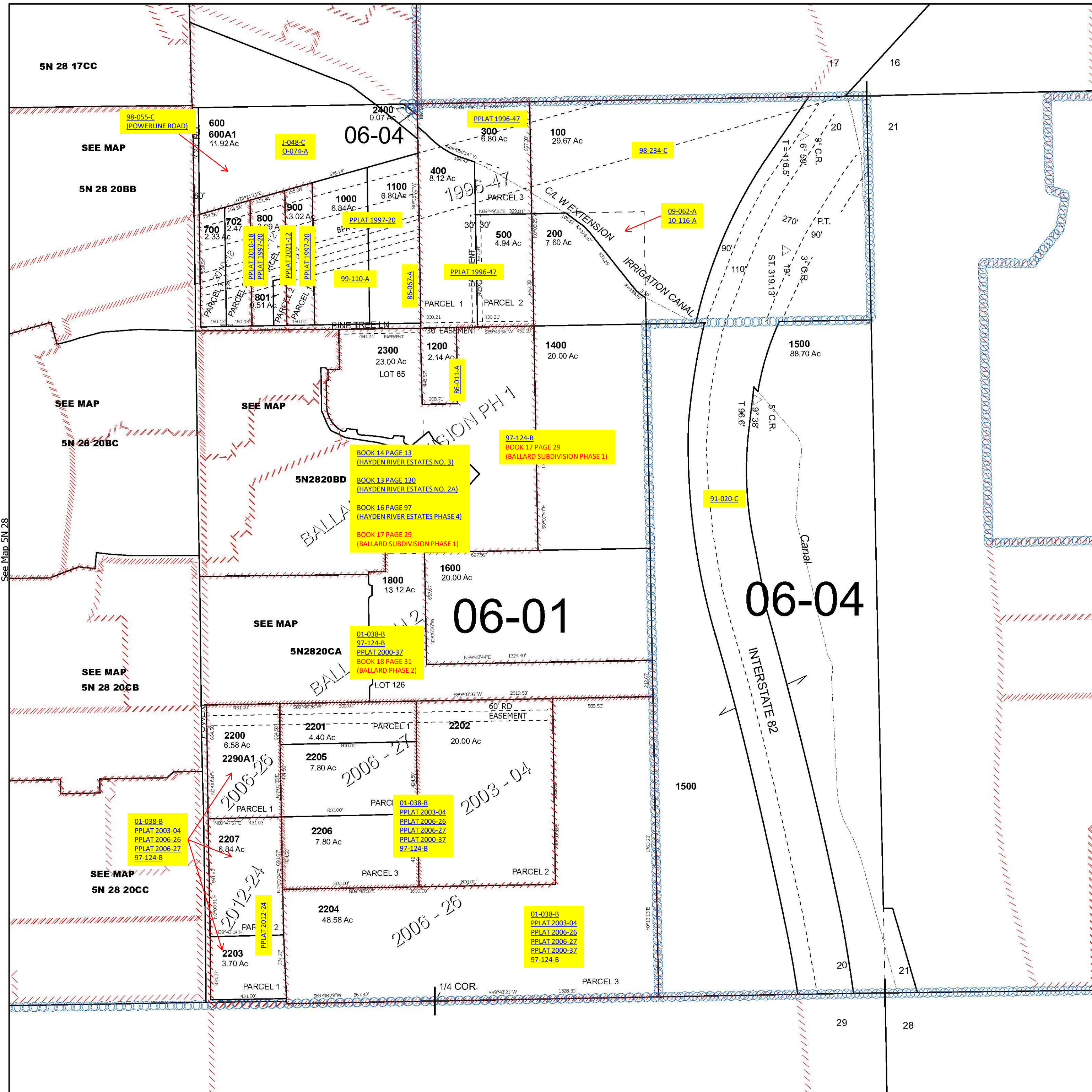
## 5N 28 20

Umatilla

SCALE 1" = 400'

See Map 5N 28 17D

- Cancelled Tax Lots
- 701
  - 1300
  - 1700
  - 1801
  - 1900
  - 2000
  - 2100
  - 2290A1



Revised 8/6/2024

See Map 5N 28

## 5N 28 20