

This map was prepared for Assessment & Taxation purposes only and was NOT prepared nor is it suitable for legal, engineering or surveying purposes.

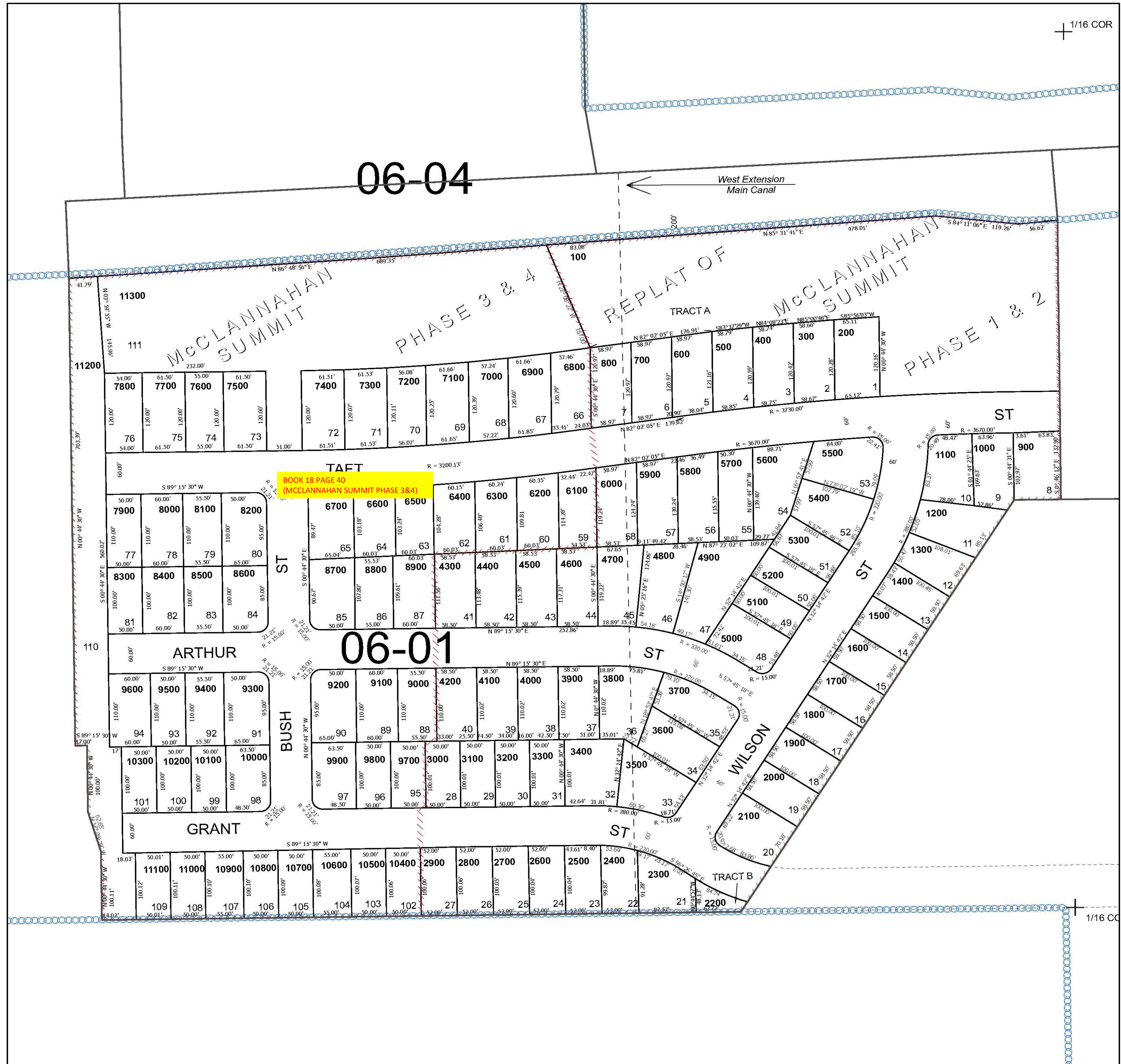
Cancelled Tax Lots

SW 1/4 SE 1/4 SEC 18 T5N R28E WM UMATILLA COUNTY SCALE 1" = 100'

Umatilla

5N 28 18DC

See Map 5N 28 18DB



See Map 5N 28 18

See Map 5N 28 18DD

Revised 12/27/2024

See Map 5N 28

5N 28 18DC