

ALSO SEE SURVEYS 04-155-B, Q-1126-C

This map was prepared for Assessment & Taxation purposes only and was NOT prepared nor is it suitable for legal, engineering or surveying purposes.

SE 1/4 SE 1/4 SEC 18 T5N R28E WM

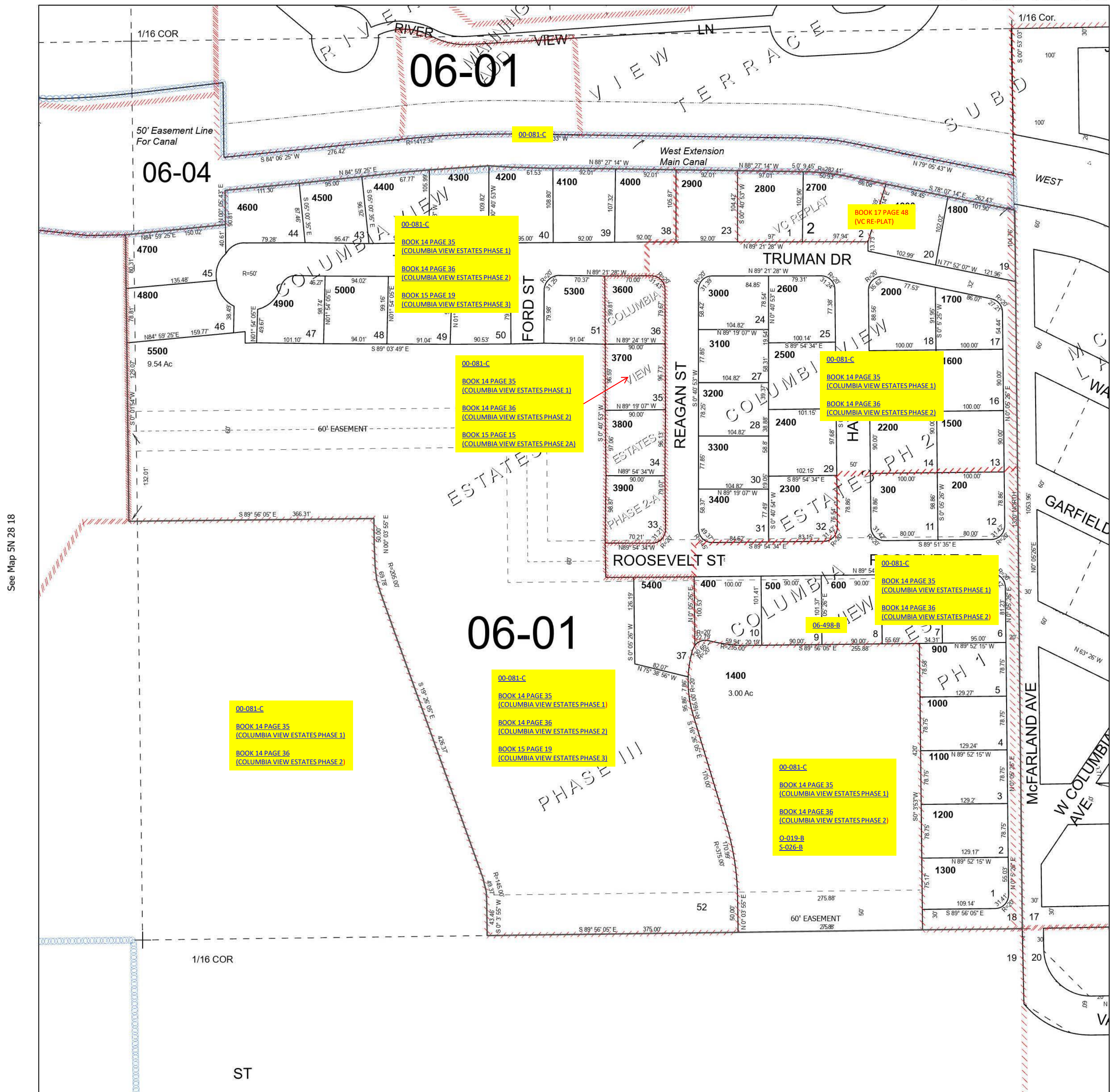
UMATILLA COUNTY

SCALE 1" = 100'

Umatilla

5N 28 18DD

Cancelled Tax Lots
100
3500



Revised 4/17/2023

See Map 5N 28

5N 28 18DD