

ALSO SEE SURVEYS 83-201-B, D-003-A, M-077-B, Q-0773-A, Q-1126-C, 04-155-B

This map was prepared for Assessment & Taxation purposes only and was NOT prepared nor is it suitable for legal, engineering or surveying purposes.

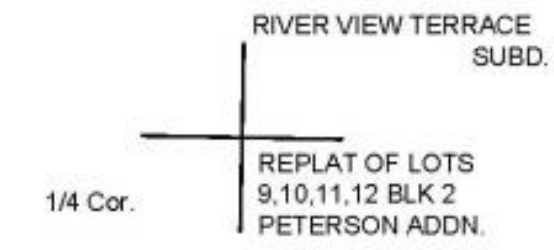


NE 1/4 SE 1/4 SEC 18 T5N R28E WM

5N2818DA

UMATILLA COUNTY

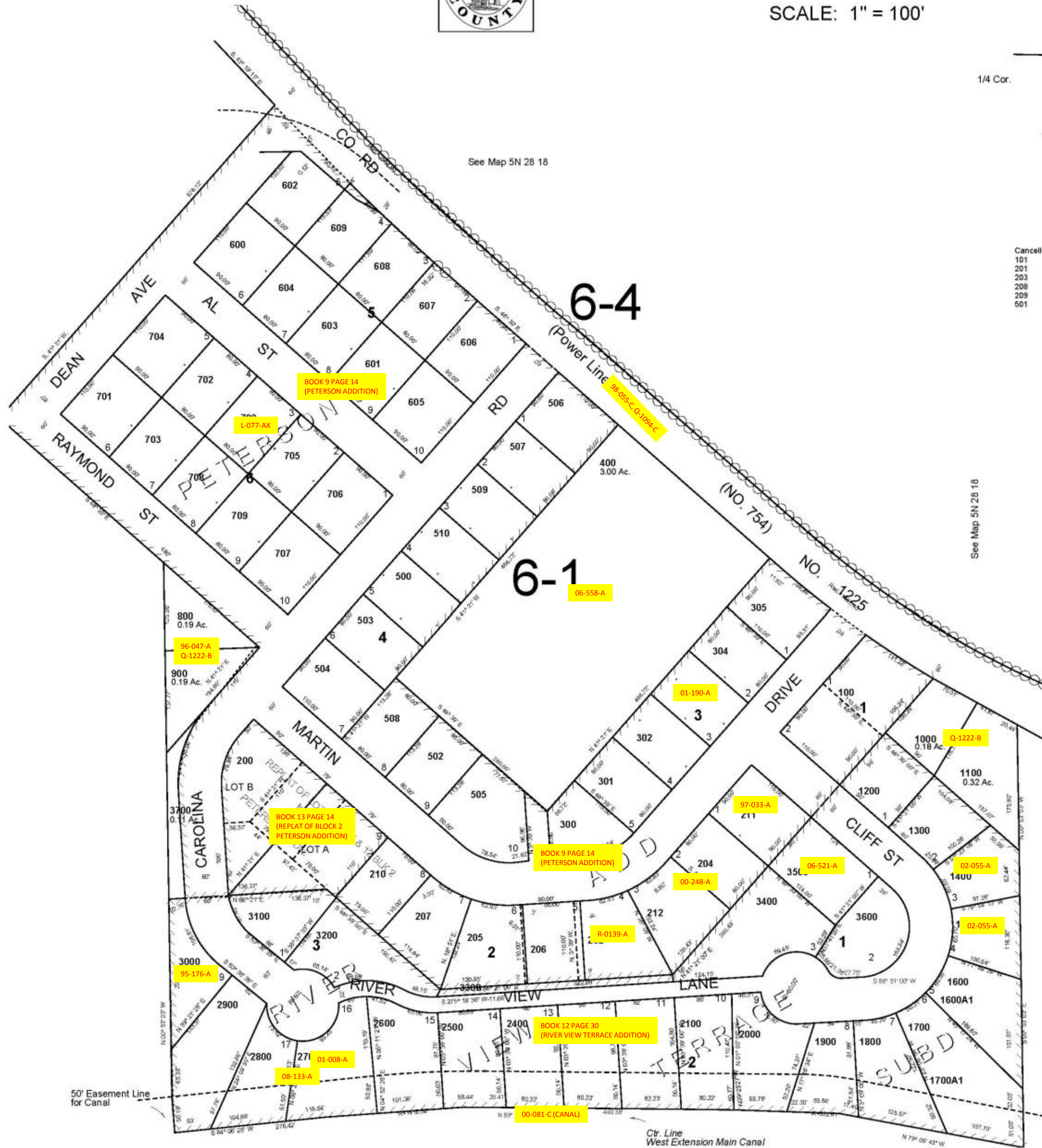
SCALE: 1" = 100'



Aerial Photo No. 1P-56

See Map 5N 28 18

Cancelled No
101
201
203
208
209
501



See Map 5N 28 18

Revised: 06-17-14

5N2818DA