

ALSO SEE SURVEYS 05-064-B, Q-1126-C, 04-155-B, Q-1257-B

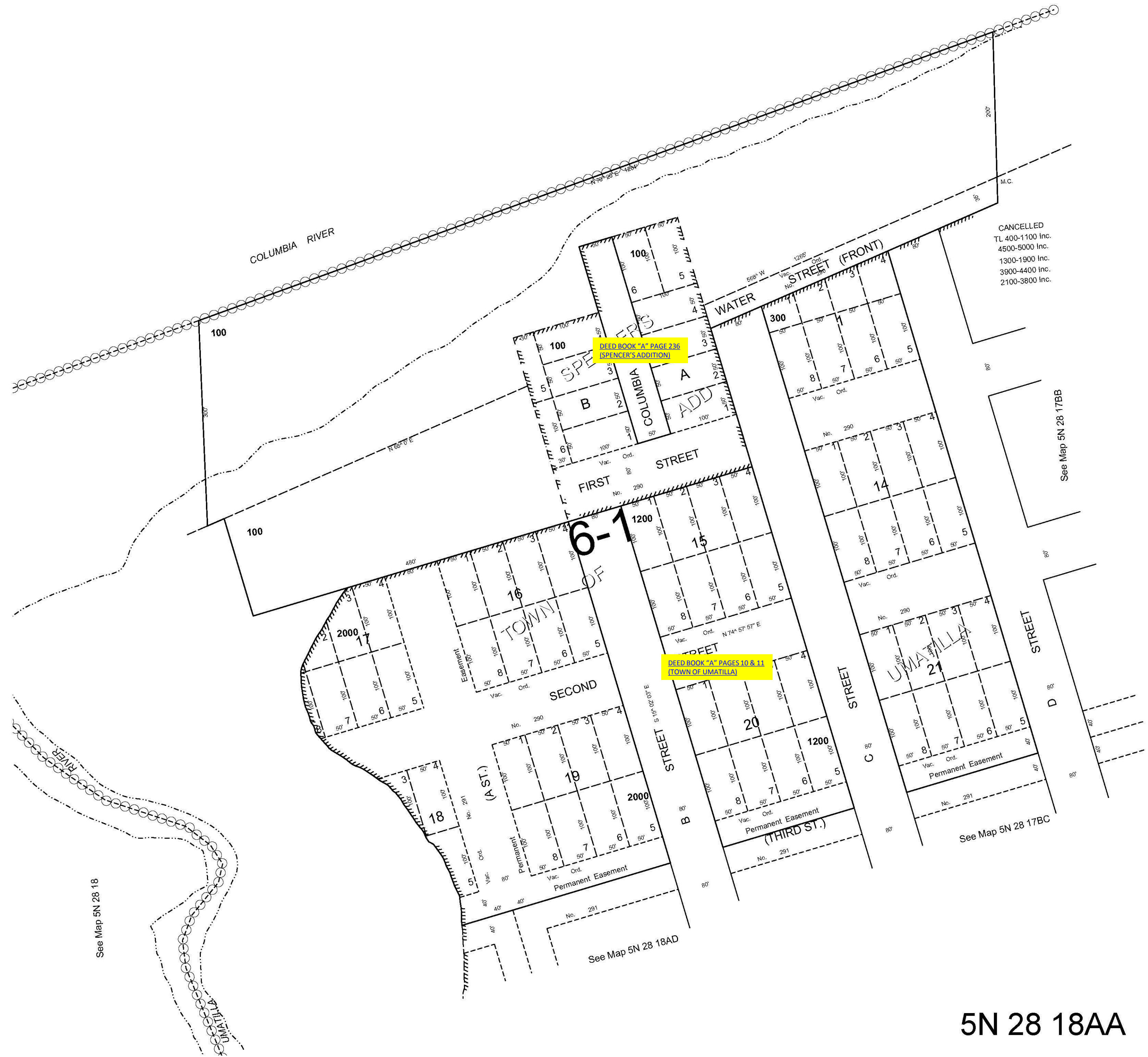
This map was prepared
for assessment purposes

NE1/4 NE1/4 SEC 18 T5N R28E WM
UMATILLA COUNTY
SCALE 1"=100'

9/25/06

5N 28 18AA

AERIAL PHOTO NO. NZ 1P-57



5N 28 18AA