

ALSO SEE SURVEYS 07-110-A, Q-1126-C, 04-155-B

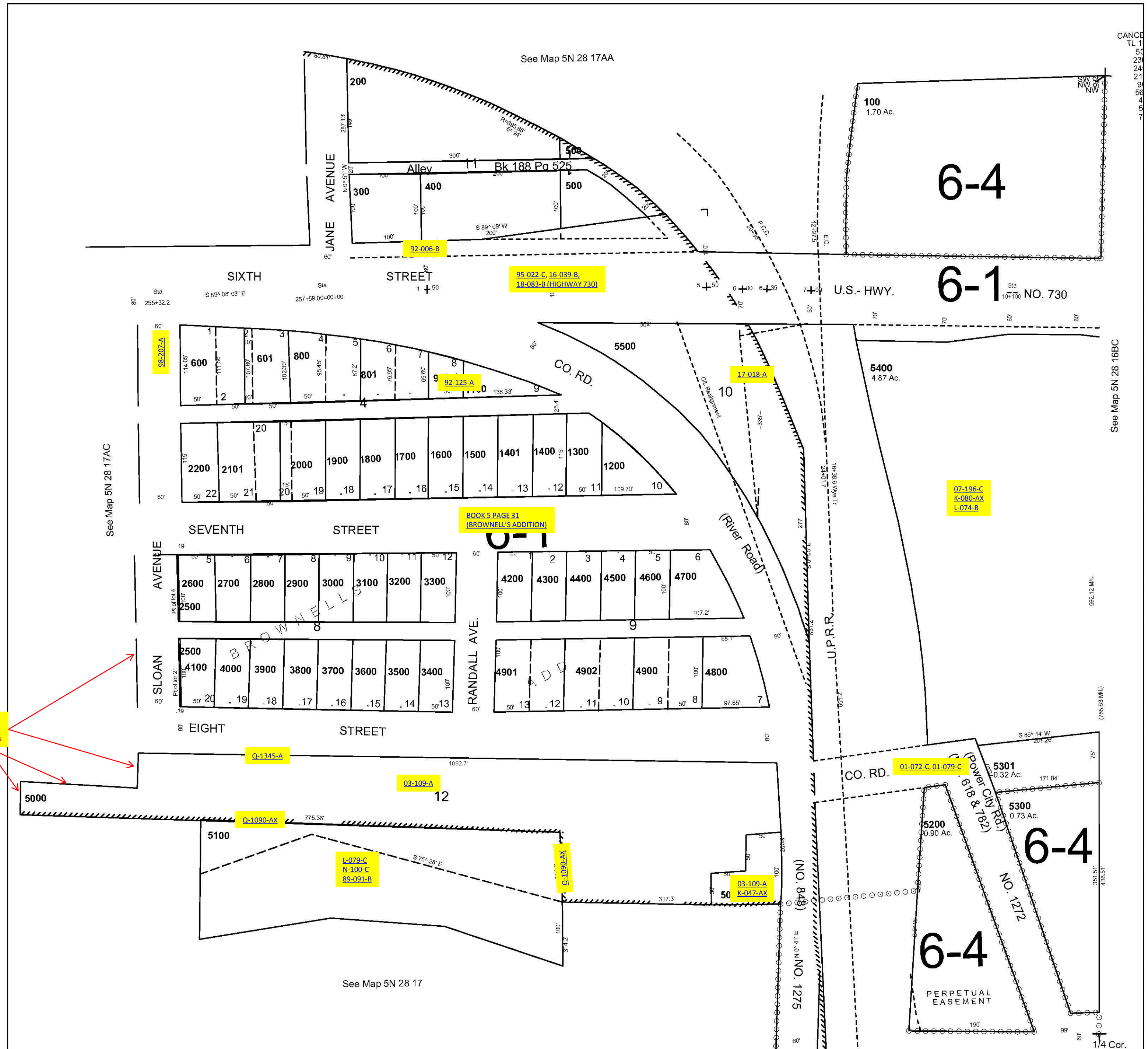
This map was prepared for assessment purposes

12/15/05

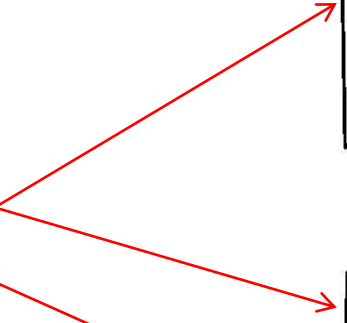
SE1/4 NE1/4 SEC 17 T5N R28E WM UMATILLA COUNTY

5N 28 17AD
AERIAL PHOTO NO. NZ 1P-78

1"=100'



L-079-C
N-300-C
89-091-B



5N 28 17AD