

This map was prepared for assessment purposes

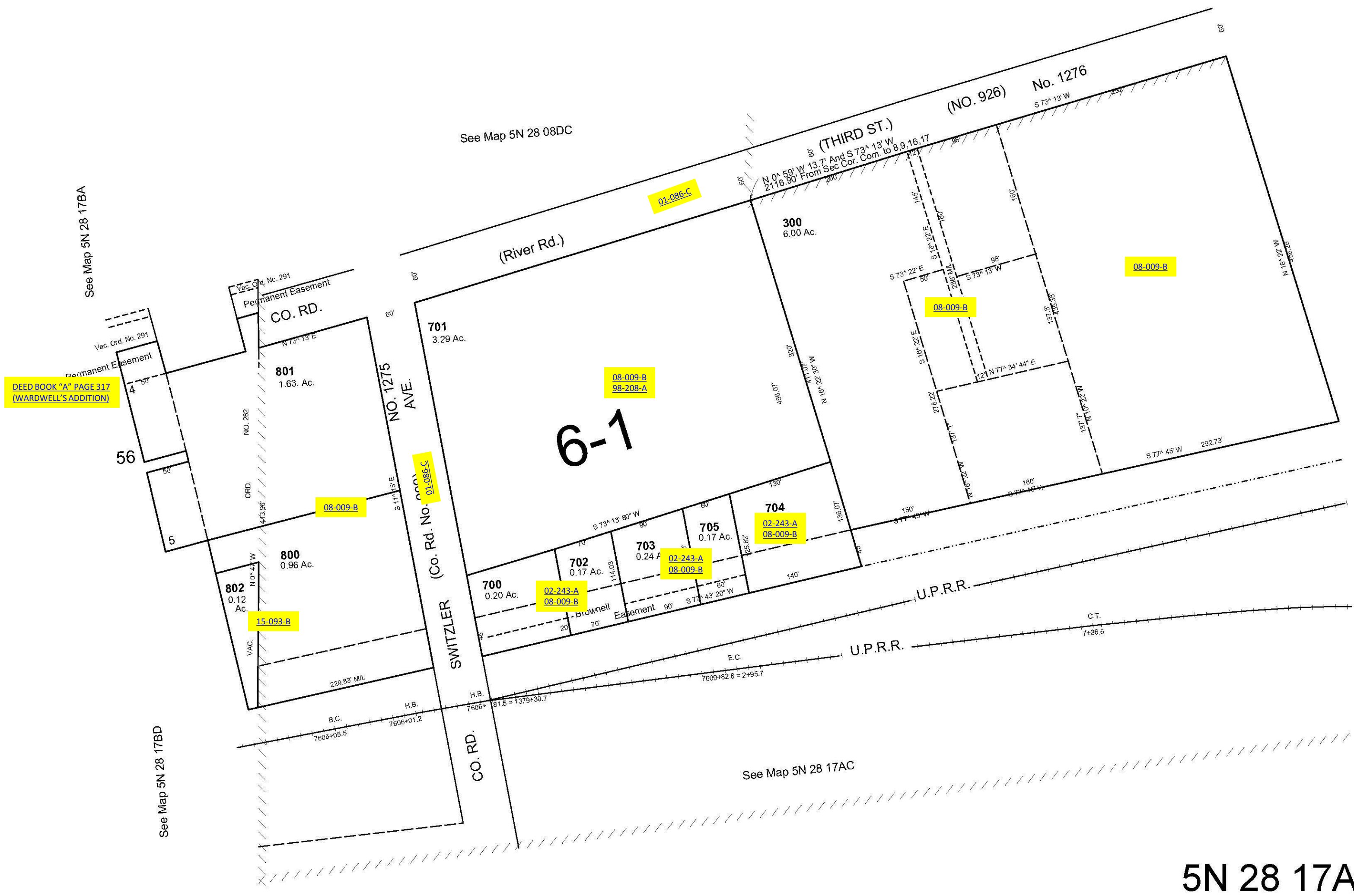
NW1/4 NE1/4 SEC 17 T5N R28E WM UMATILLA COUNTY SCALE 1"=100'

9/25/06

5N 28 17AB

AERIAL PHOTO NO. 1P-58

CANCELLED
TL 100
200
400
500
600



See Map 5N 28 17BA

DEED BOOK "A" PAGE 317
(WARDWELL'S ADDITION)

See Map 5N 28 17BD

See Map 5N 28 08DC

See Map 5N 28 17AC

See Map 5N 28 17AA

5N 28 17AB