

ALSO SEE SURVEYS Q-0766-A, Q-1126-C

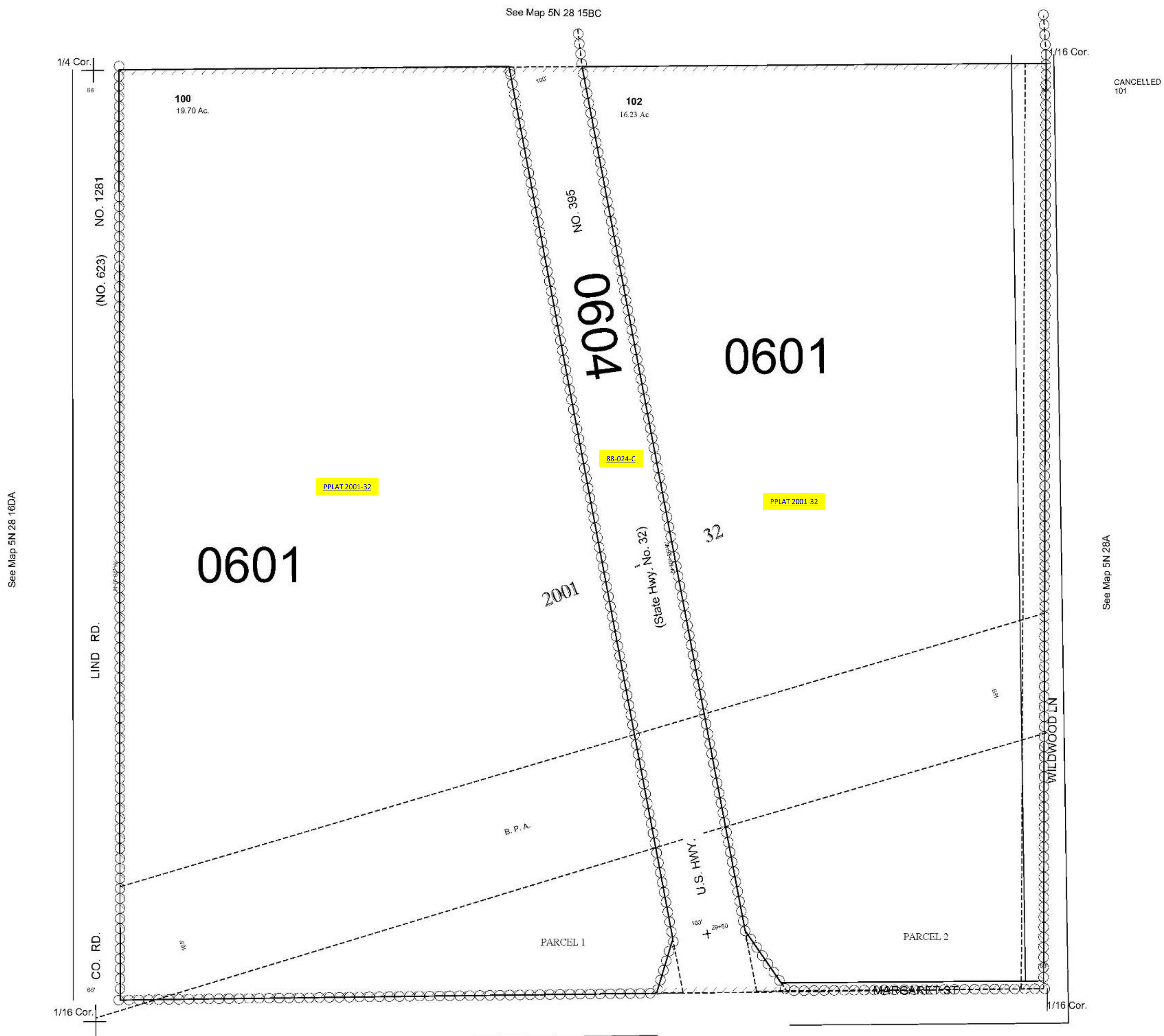
This map was prepared for Assessment & Taxation purposes only and was NOT prepared nor is it suitable for legal, engineering or surveying purposes.

# NW1/4 SW1/4 SEC 15 T5N R28E WM UMATILLA COUNTY

5N 28 15CB  
AERIAL PHOTO NO NZ 1P-58

SCALE 1"=100'

See Map 5N 28 15BC



See Map 5N 28 16DA

See Map 5N 28A

See Map 5N 28 15CC

Revised: 03-20-20  
5N 28 15CB