

ALSO SEE SURVEYS 03-276-C, 04-155-B, Q-1126-C

This map was prepared for Assessment & Taxation purposes only and was NOT prepared nor is it suitable for legal, engineering or surveying purposes.

NE 1/4 NW 1/4 SEC 15 T5N R28E WM

Revised: 5/07/08

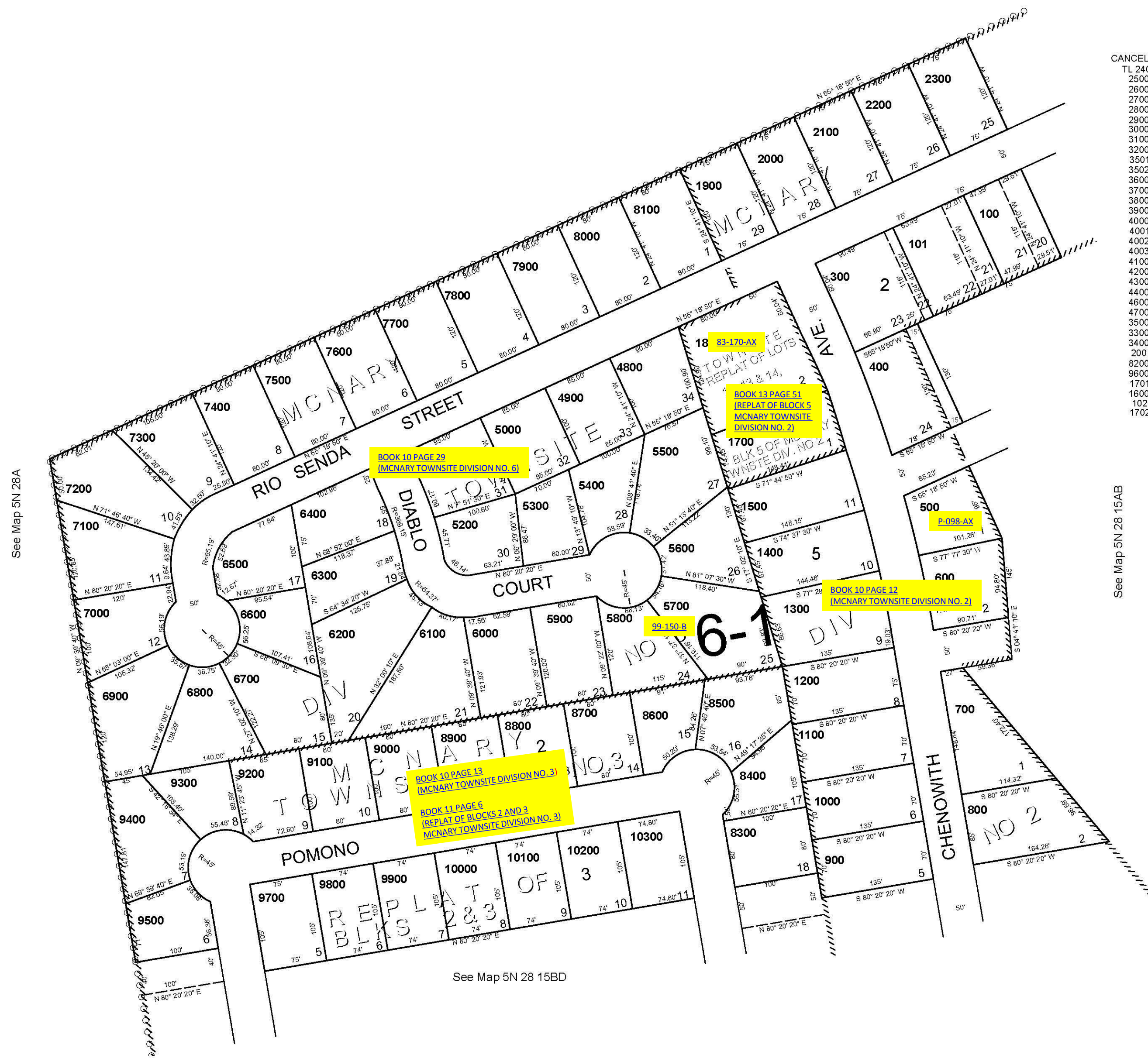
5N 28 15BA

UMATILLA COUNTY

AERIAL PHOTO NO. 1P-59

SCALE 1"=100'

See Map 5N 28A



- CANCELLED
- TL 2400
- 2500
- 2600
- 2700
- 2800
- 2900
- 3000
- 3100
- 3200
- 3501
- 3502
- 3600
- 3700
- 3800
- 3900
- 4000
- 4001
- 4002
- 4003
- 4100
- 4200
- 4300
- 4400
- 4600
- 4700
- 3500
- 3300
- 3400
- 200
- 8200
- 9600
- 1701
- 1600
- 102
- 1702

See Map 5N 28A

See Map 5N 28 15AB

See Map 5N 28 15BD

5N 28 15BA