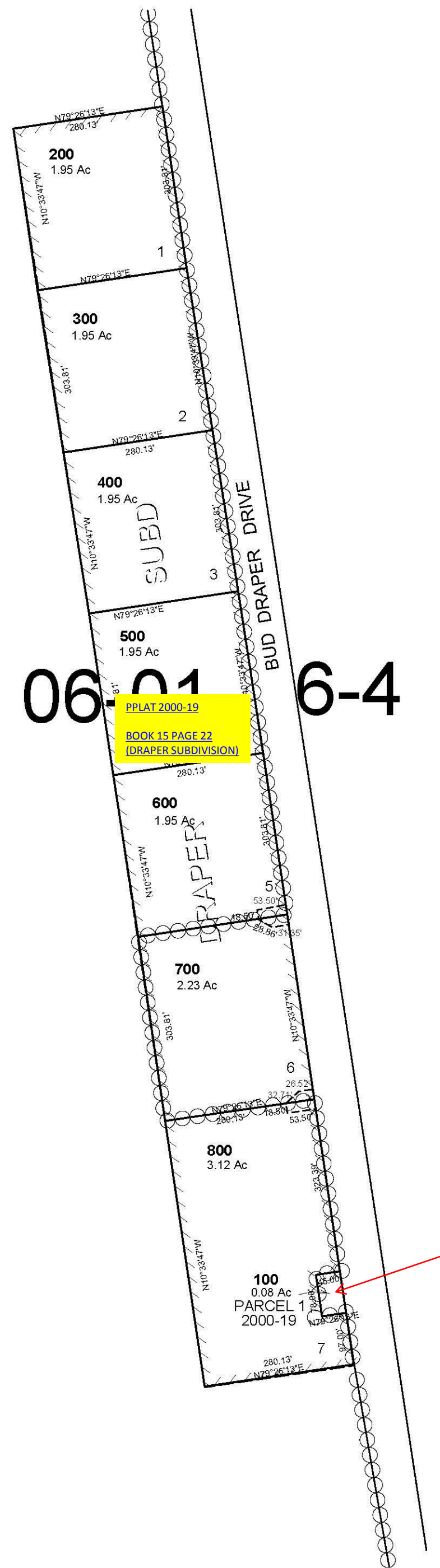
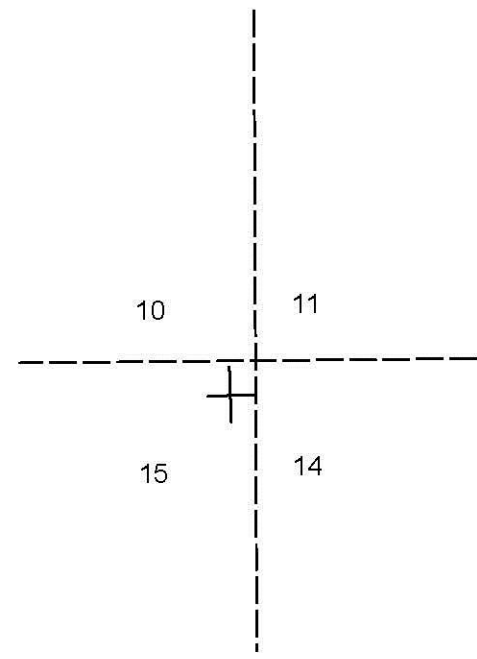


ALSO SEE SURVEY 04-155-B

This map was prepared for Assessment & Taxation purposes only and was NOT prepared nor is it suitable for legal, engineering or surveying purposes.

NW1/4 SEC 14 T5N R28E WM UMATILLA COUNTY SCALE 1"=200'

5N 28 14B
Aerial Photo No. NZ 1P-58-60
102-103



06-01 6-4

Revised: 8/7/09

5N 28 14B