

ALSO SEE SURVEYS Q-1125-C, 06-461-B, I-016-C; CORNER RECORDS; G.L.O. SURVEYS

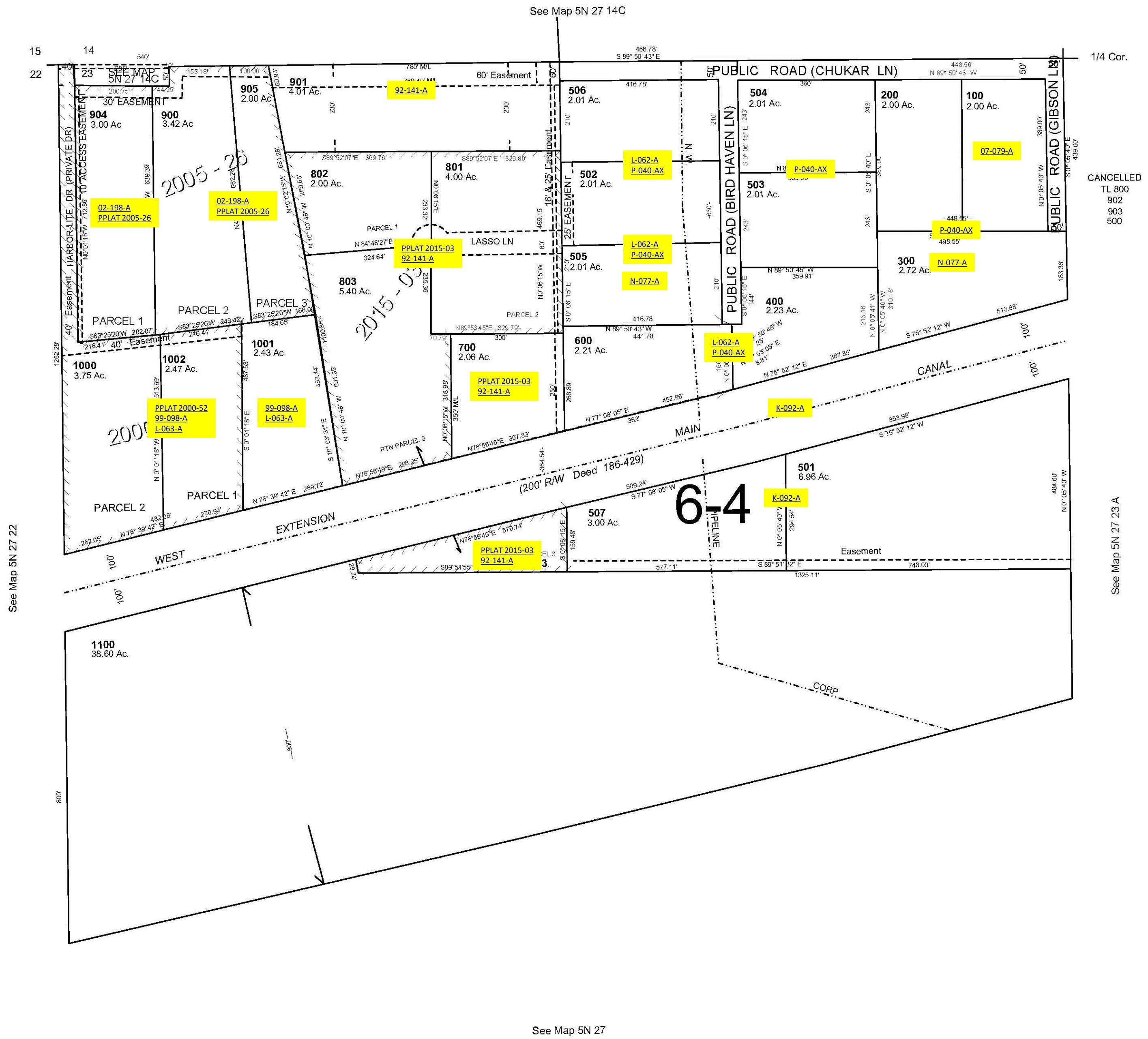
This map was prepared for Assessment & Taxation purpose only and was NOT prepared nor is it suitable for legal, engineering or surveying purposes.

# NW1/4 SEC 23 T5N R27E WM UMATILLA COUNTY

## 5N 27 23B

AERIAL PHOTO NO. NZ 1P-54

1"=200'



1/4 Cor. +

Revised: 3/05/15

+ Cntr. Sec.

## 5N 27 23B