

ALSO SEE SURVEYS 06-461-B, I-016-C, D-043-AX, J-006-A, J-102-A; CORNER RECORDS; G.L.O. SURVEYS

This map was prepared for Assessment & Taxation purposes only and was NOT prepared nor is it suitable for legal, engineering or surveying purposes.

SEC 22 T5N R27E WM UMATILLA COUNTY

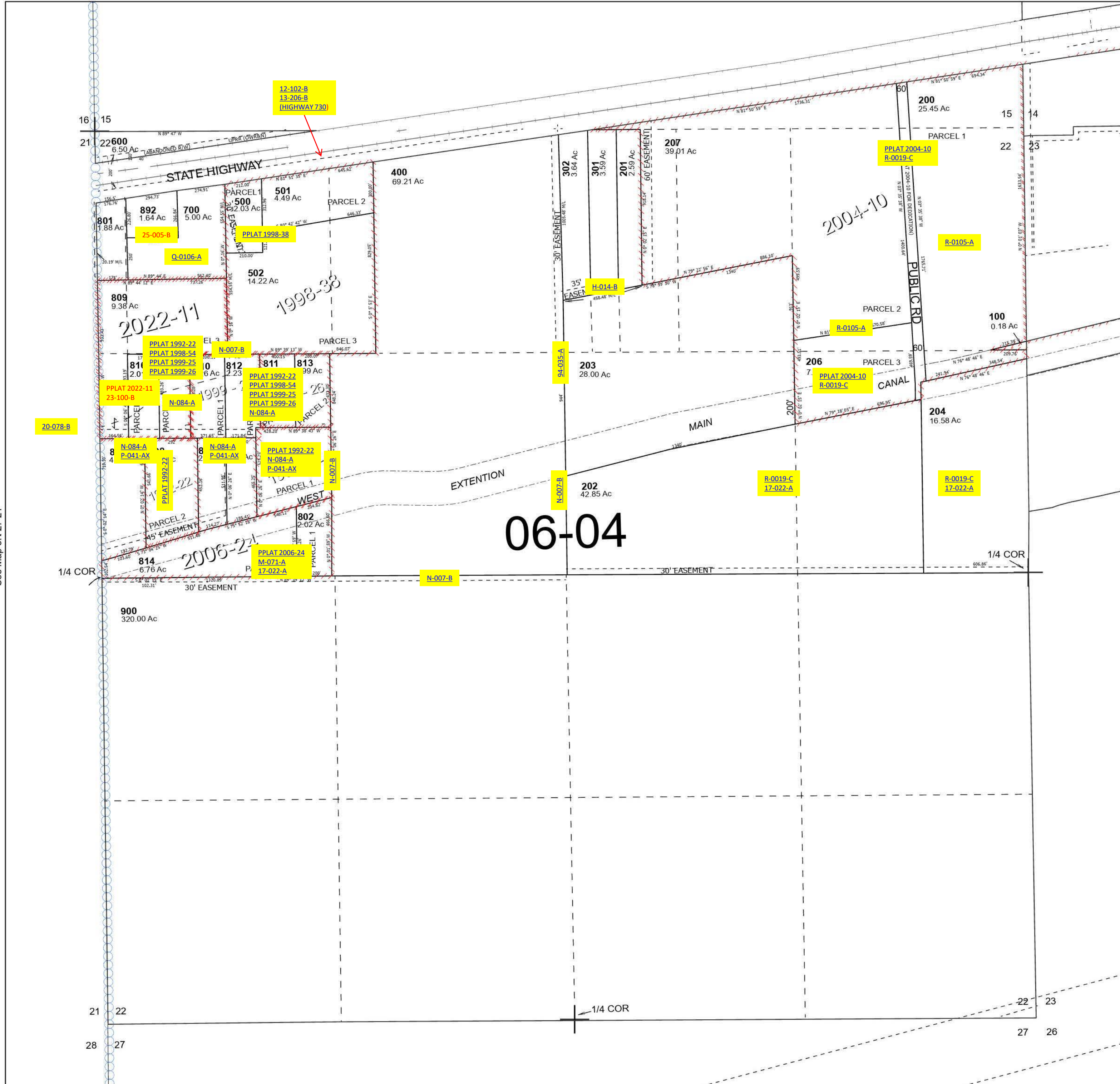
5N 27 22

SCALE 1" =400'

See Map 5N 27

Cancelled Tax Lots

- 205
- 300
- 303
- 304
- 803
- 807
- 890
- 891



Revised 7/3/2023

See Map 5N 27

5N 27 22