

ALSO SEE SURVEYS Q-1125-C, 03-054-C, 13-140-B, 06-461-B, 91-001-B, 99-023-B, C-020-B, I-016-C, S-156-C, D-043-AX; CORNER RECORDS; G.L.O. SURVEYS

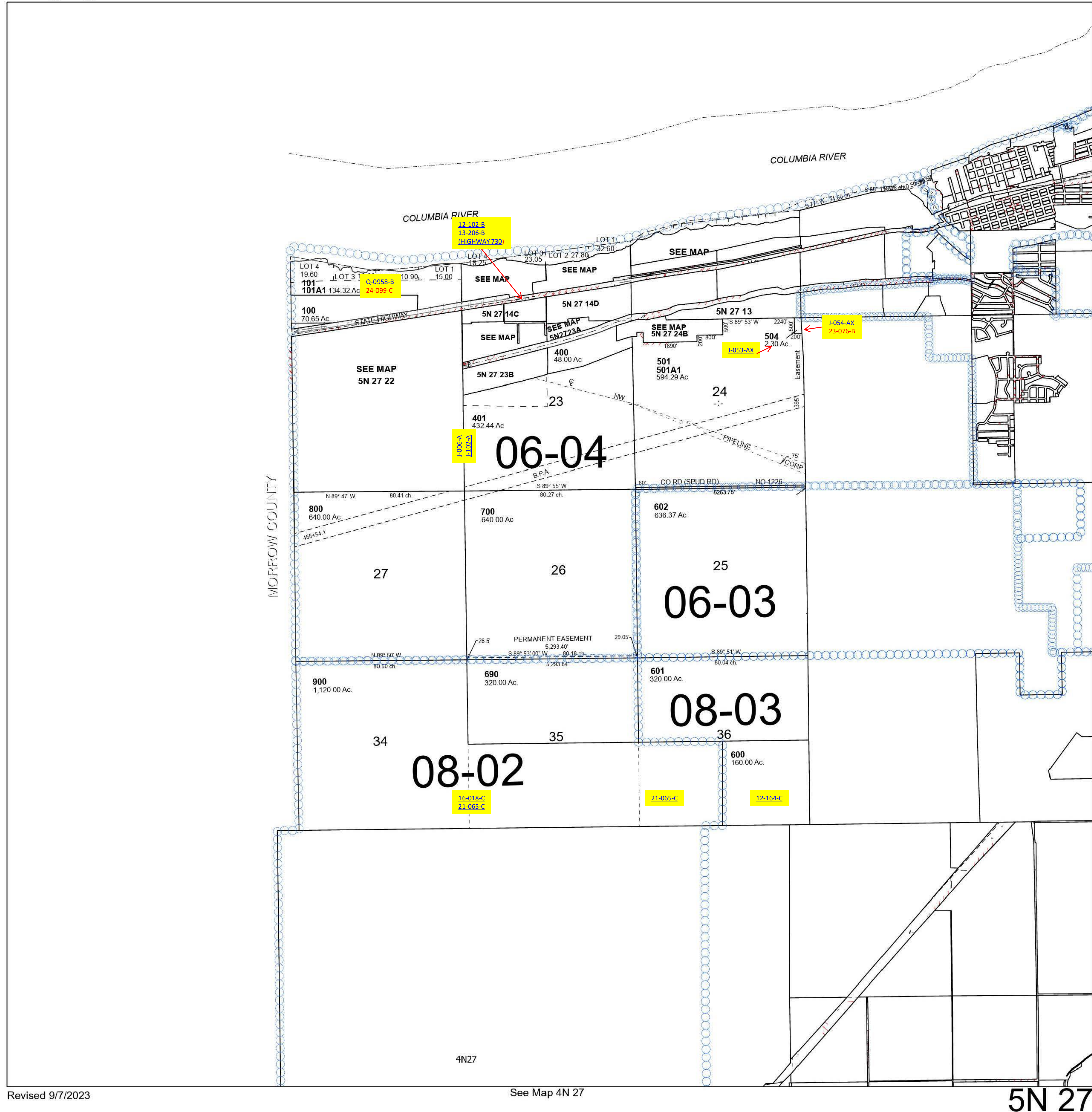
This map was prepared for Assessment & Taxation purposes only and was NOT prepared nor is it suitable for legal, engineering or surveying purposes.

Cancelled Tax Lots		
200	302	507
201	303	
202	304	
203	402	
204	403	
205	500	
207	502	
208	503	
300	505	
301	506	

T5N R27E WM UMATILLA COUNTY

SCALE 1" = 2,000'

5N 27



Revised 9/7/2023

See Map 4N 27

5N 27