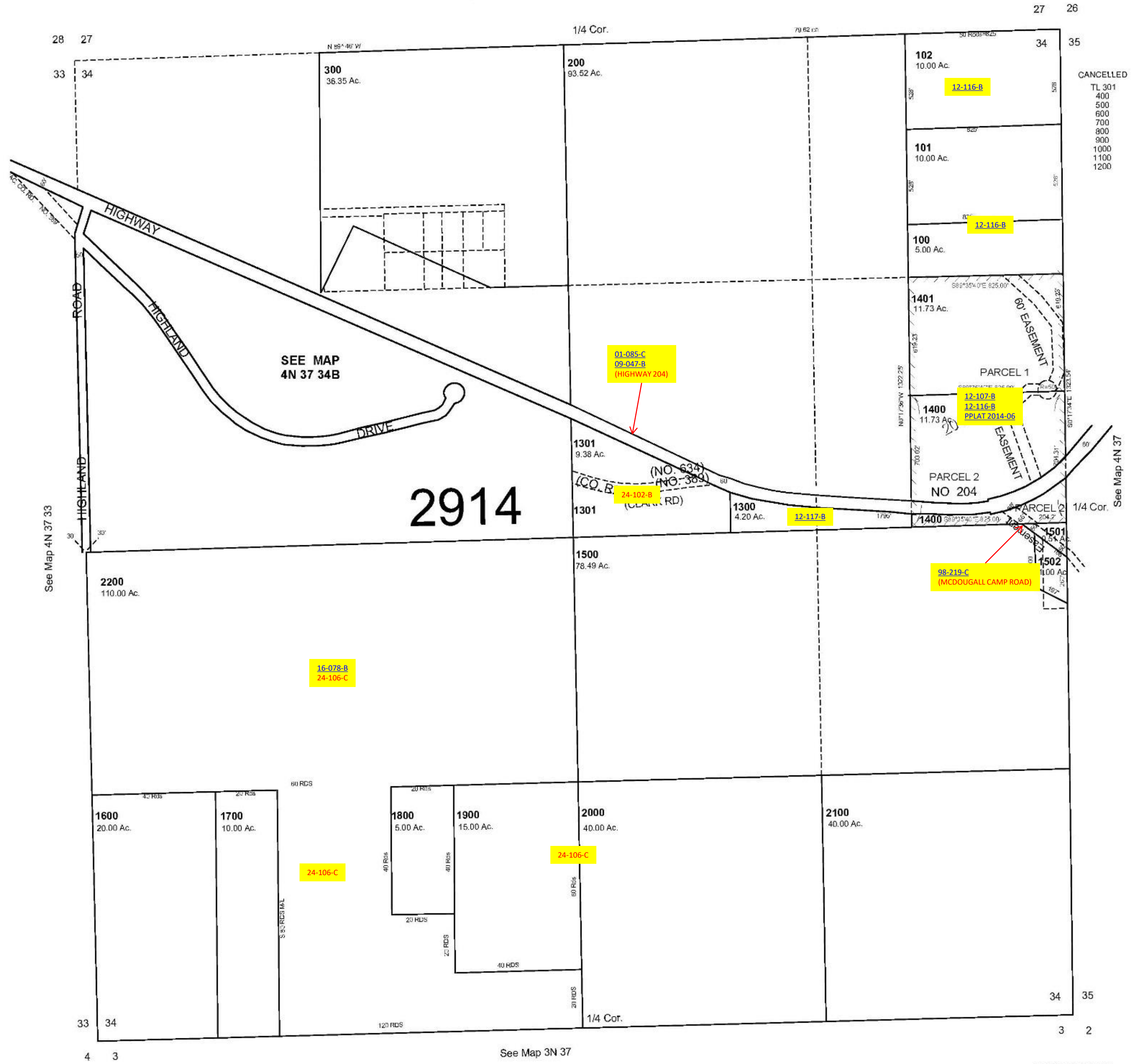


This map was prepared for Assessment & Taxation purposes only and was NOT prepared nor is it suitable for legal, engineering or surveying purposes.

SEC 34 T4N R37E WM
UMATILLA COUNTY
SCALE 1"=400'

4N 37 34
AERIAL PHOTO NO 9P-36

See Map 4N 37



REVISED 03-02-20

4N 37 34