

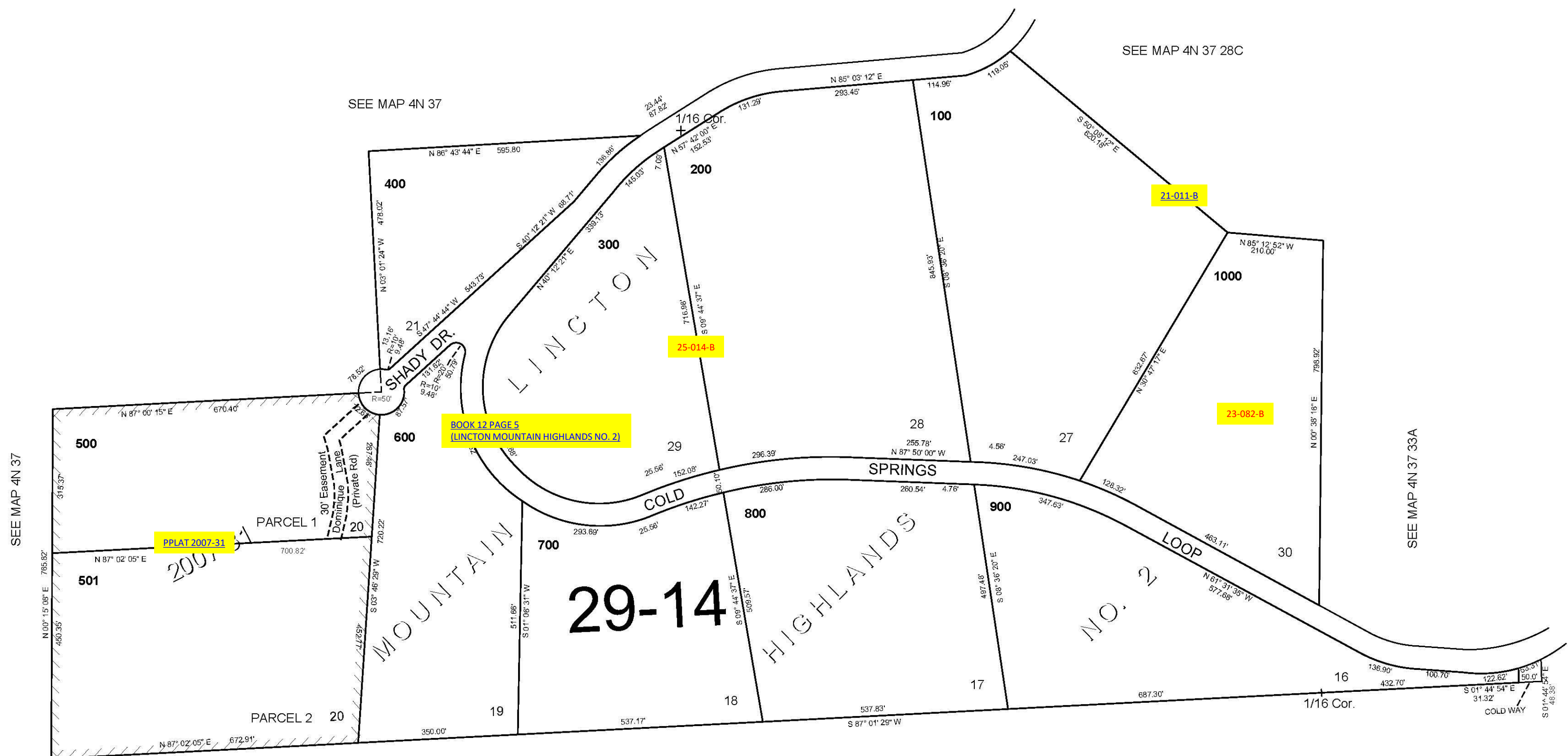
This map was prepared for Assessment and Taxation purposes only and has NOT been prepared for legal, engineering or surveying purposes.

NW1/4 SEC 33 T4N R37E WM UMATILLA COUNTY

SCALE 1"=200'

Revised: 11/26/07

4N 37 33B
AERIAL PHOTO NO 9P-38



SEE MAP 4N 37

SEE MAP 4N 37

SEE MAP 4N 37 28C

SEE MAP 4N 37 33A

SEE MAP 4N 37

4N 37 33B