

ALSO SEE SURVEYS 91-075-C, 93-064-C; CORNER RECORDS; G.L.O. SURVEYS

This map was prepared for assessment purposes

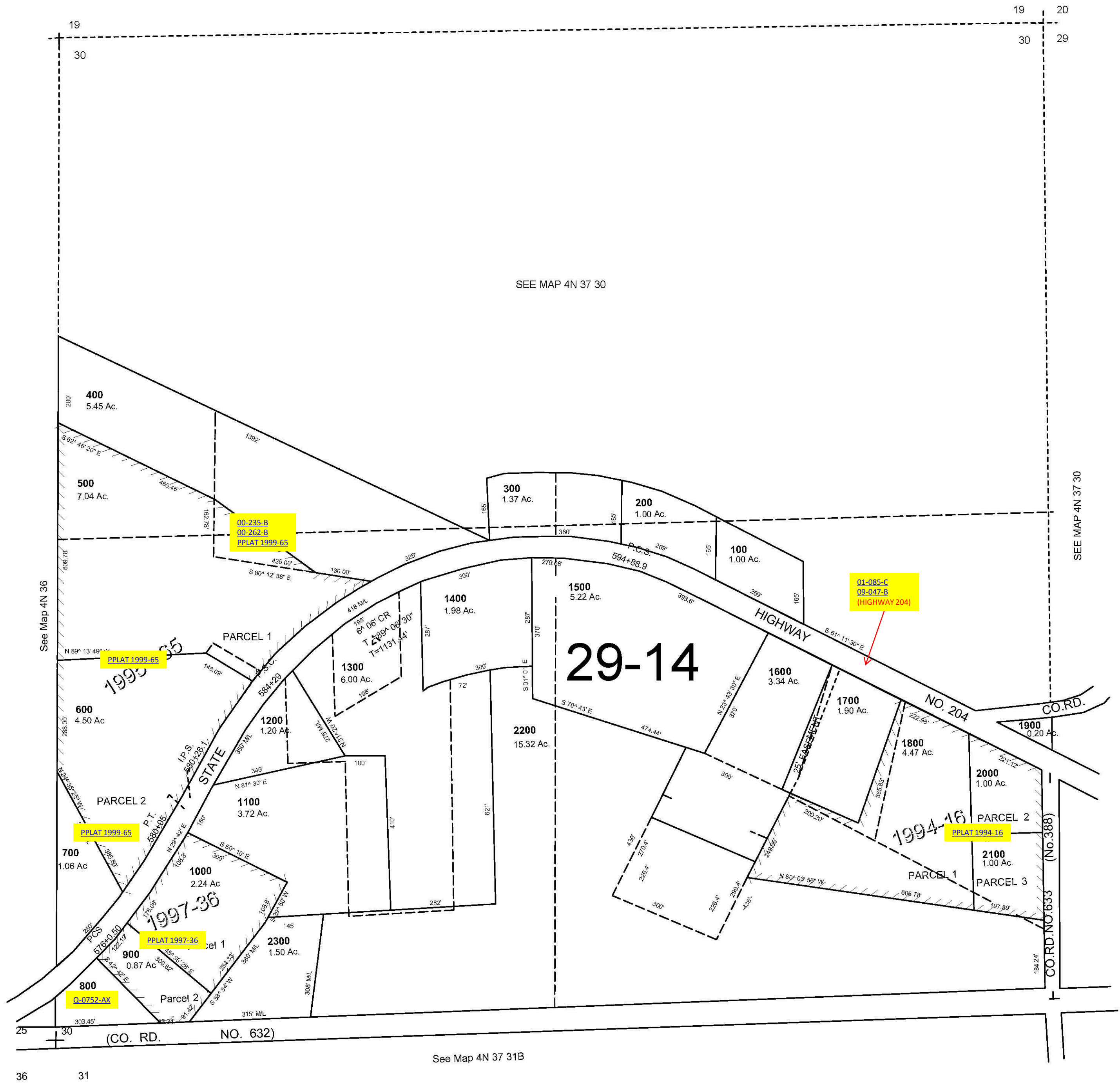
SW1/4 SEC 30 T4N R37E WM UMATILLA COUNTY

3/18/05

4N 37 30C

AERIAL PHOTO NO. 9P-39

1"=200'



4N 37 30C