

ALSO SEE SURVEYS 95-066-B, 99-270-B, 91-075-C, 93-064-C, N-065-B; CORNER RECORDS; G.L.O. SURVEYS

This map was prepared for Assessment & Taxation purposes only and was NOT prepared nor is it suitable for legal, engineering or surveying purposes.

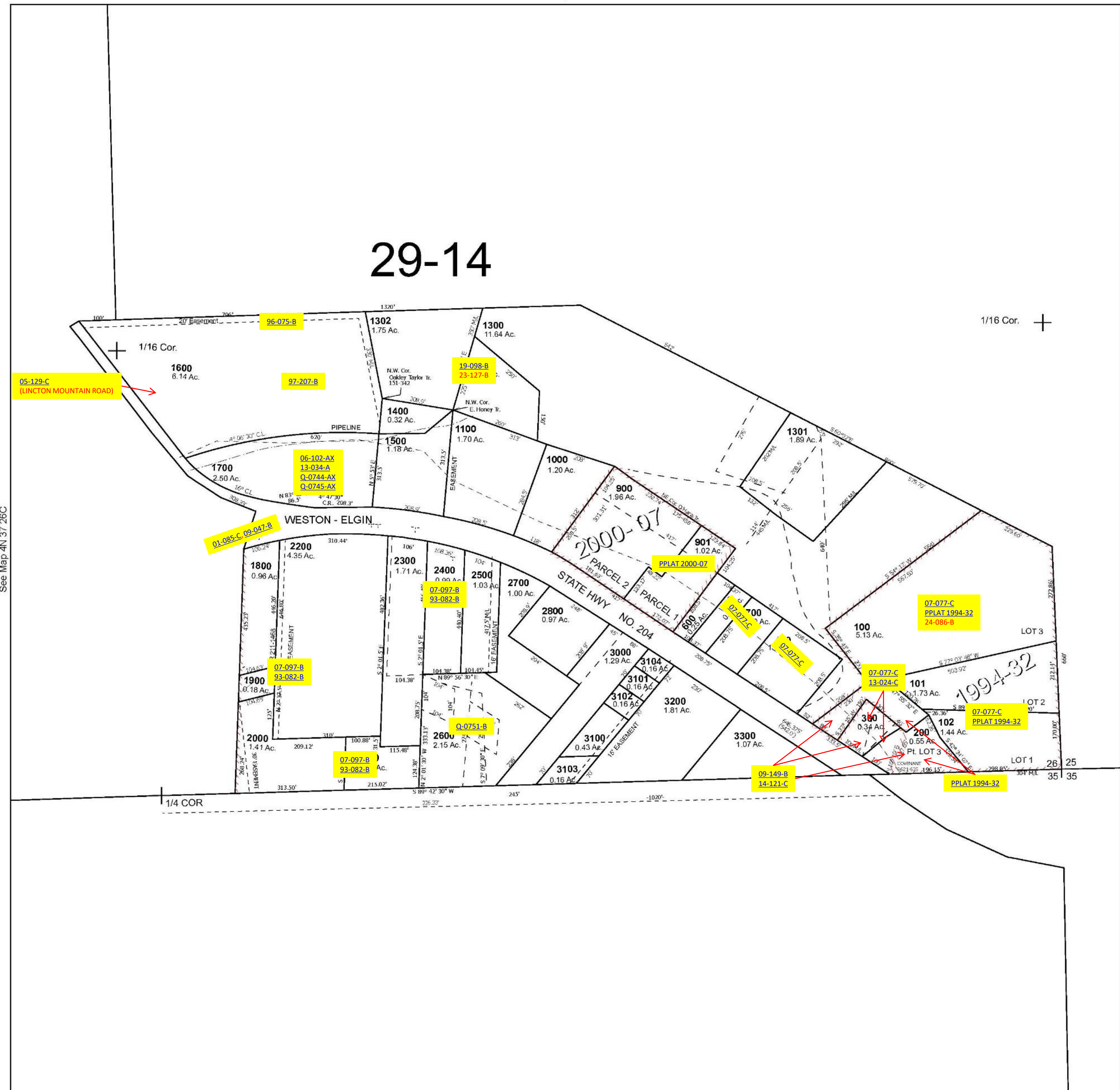
SE 1/4 SEC 26 T4N R37E WM UMATILLA COUNTY

4N 37 26D

SCALE 1" = 200'

Cancelled Tax Lots
800
2690
2900

See Map 4N 37



Revised 1/14/2025

See Map 4N 37 35

4N 37 26D