

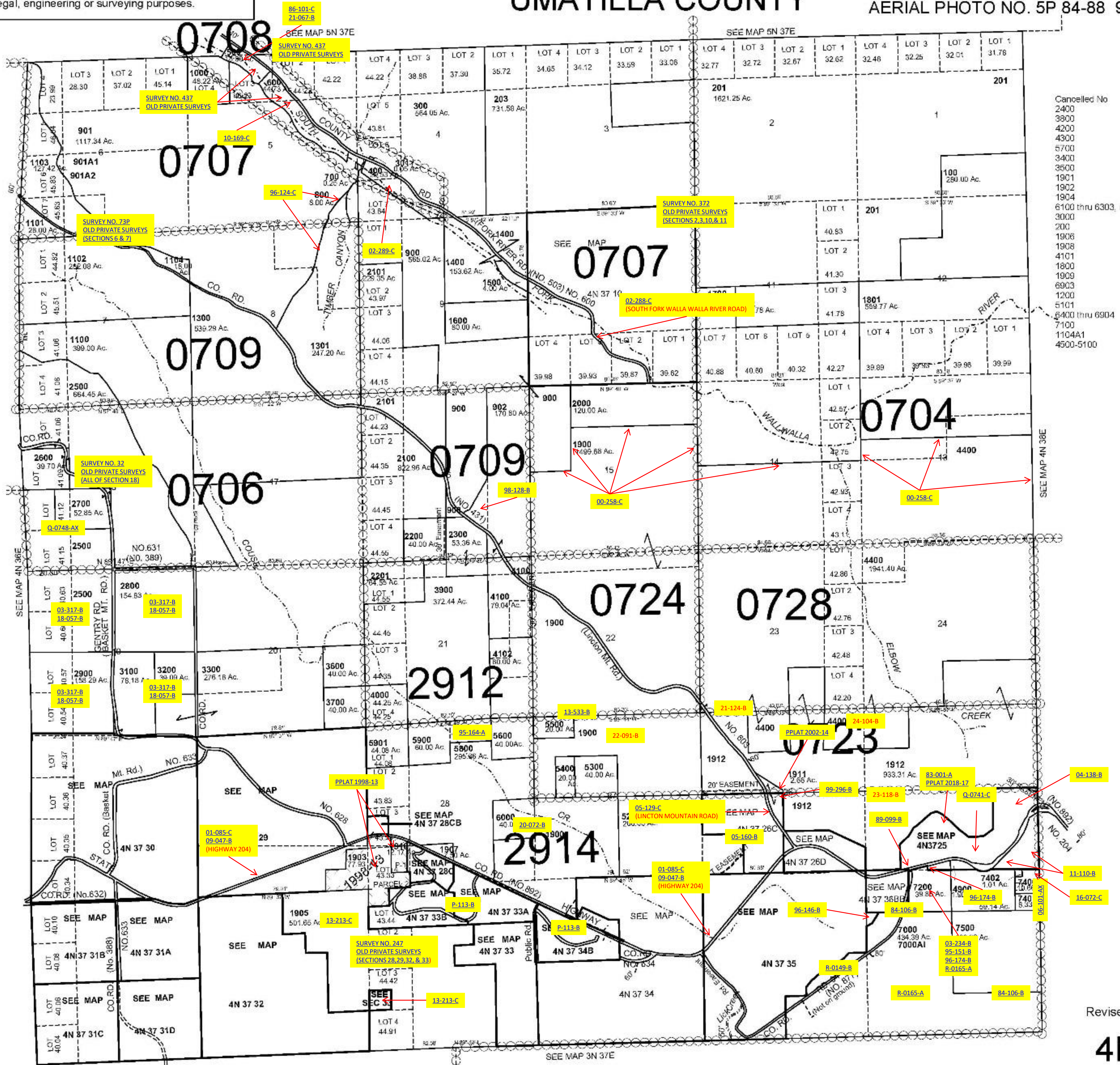
ALSO SEE SURVEYS 06-100-AX; 06-104-A, 08-019-B, Q-0746-A, Q-0750-B; Q-0757-A, 91-075-C; 93-064-C, 94-006-B; 99-047-B, F-025-AX, N-065-B; CORNER RECORDS; G.L.O. SURVEYS

This map was prepared for Assessment & Taxation purposes only and was NOT prepared nor is it suitable for legal, engineering or surveying purposes.

SCALE 1"=2000'

T4N R37E WM  
UMATILLA COUNTY

4N 37  
AERIAL PHOTO NO. 5P 84-88 9P 33-41



Cancelled No  
2400  
3800  
4200  
4300  
4300  
5700  
3400  
3500  
1901  
1902  
1904  
6100 thru 6303, inc  
3000  
200  
1906  
1908  
4101  
1800  
1909  
6903  
1200  
5101  
6400 thru 6904  
7100  
1104A1  
4500-5100

Revised: 10-25-18

4N 37