

This map was prepared for Assessment & Taxation purposes only and was NOT prepared nor is it suitable for legal, engineering or surveying purposes.

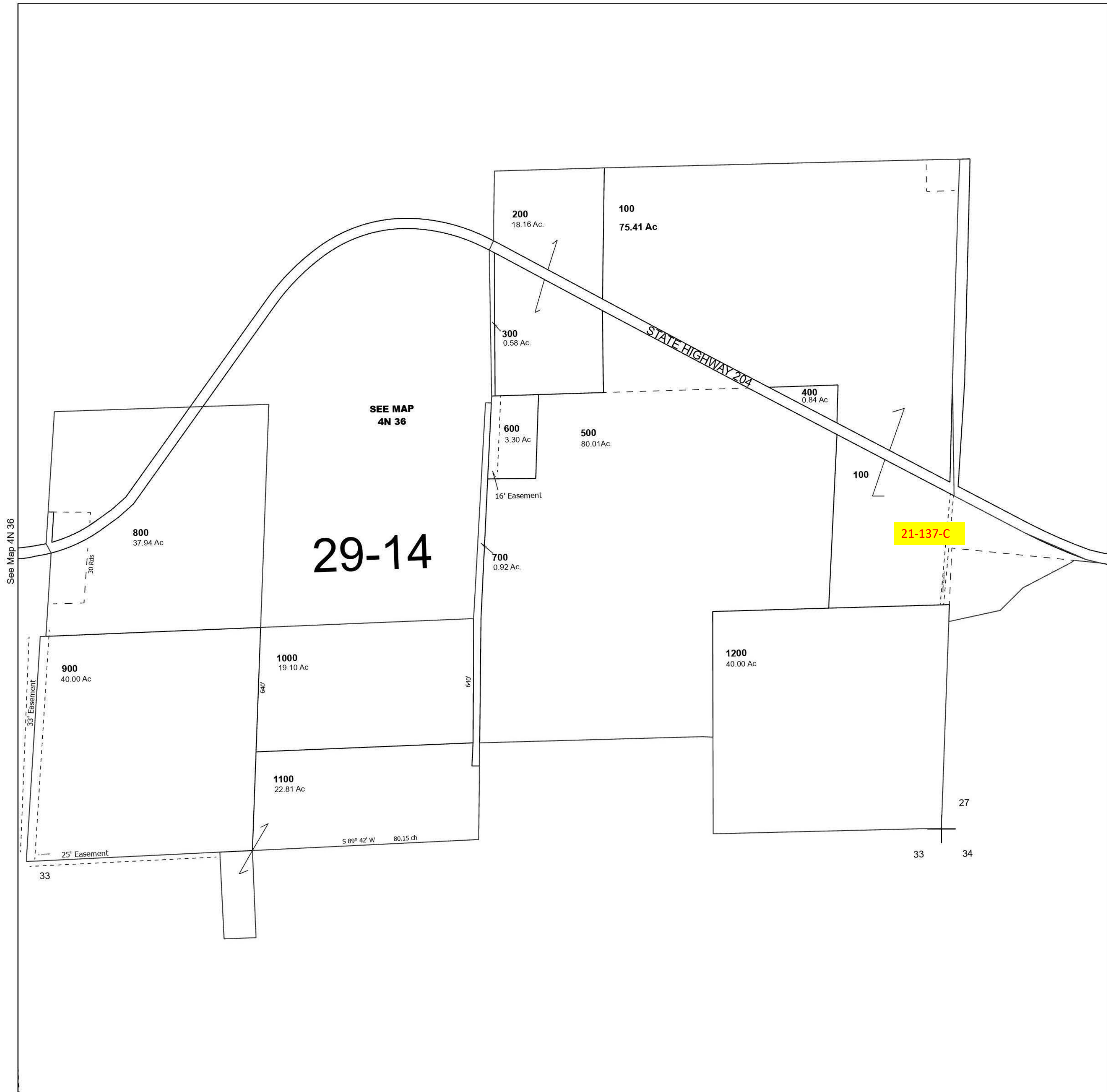
Cancelled Tax Lots:

SEC 28 T4N R36E WM UMATILLA COUNTY

4N 36 28

SCALE 1" = 400'

See Map 4N 36



Revised 8/10/2023

See Map 4N 36

4N 36 28