

ALSO SEE SURVEY 11-106-C

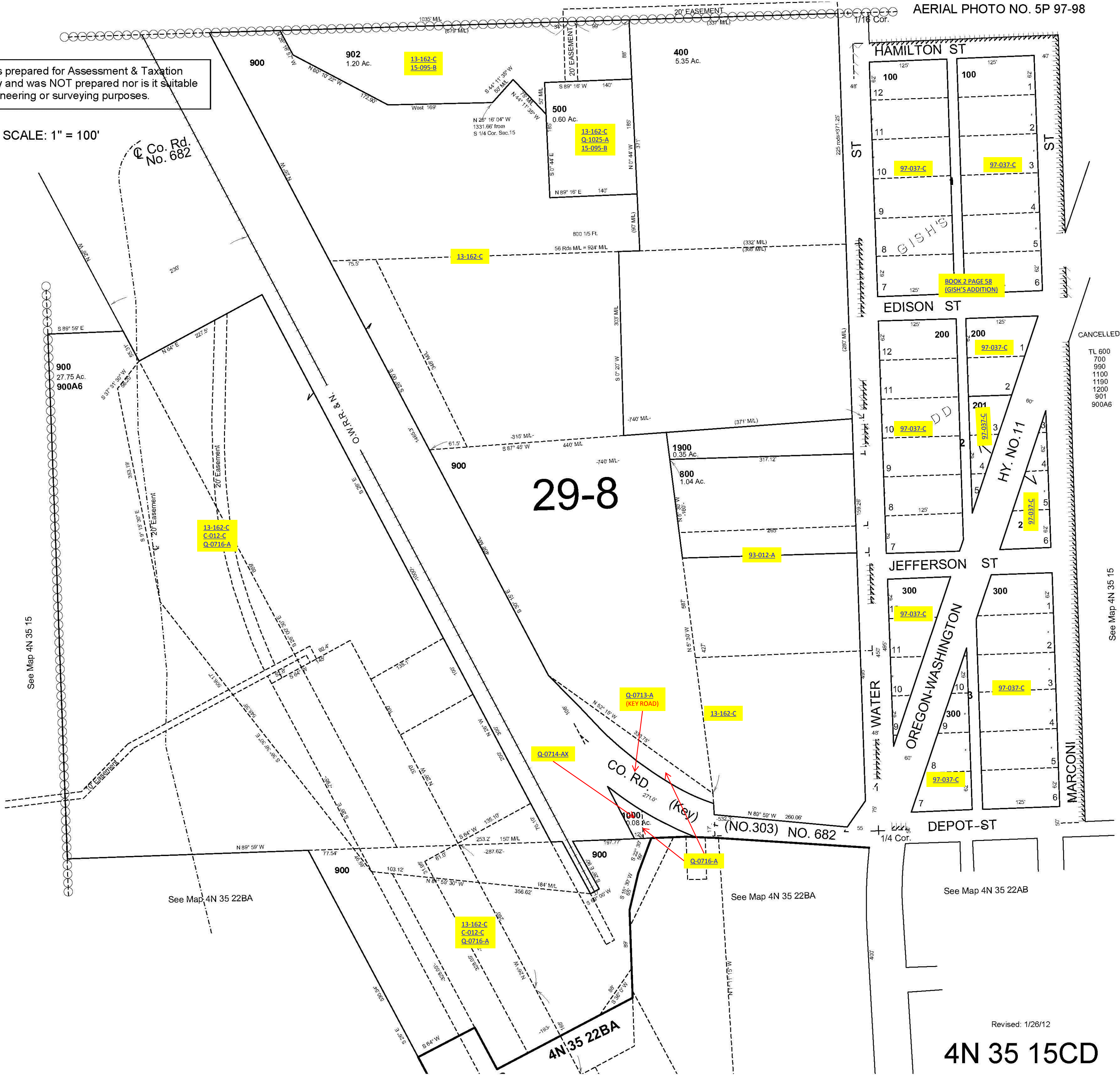
# SE1/4 SW1/4 SEC 15 T4N R35E WM UMATILLA COUNTY 4N 35 15CD

AERIAL PHOTO NO. 5P 97-98

This map was prepared for Assessment & Taxation purposes only and was NOT prepared nor is it suitable for legal, engineering or surveying purposes.

SCALE: 1" = 100'

Co. Rd. No. 682



CANCELLED

TL 600  
700  
990  
1100  
1190  
1200  
901  
900A6

See Map 4N 35 15

See Map 4N 35 15

See Map 4N 35 22BA

See Map 4N 35 22BA

See Map 4N 35 22AB

Revised: 1/28/12

## 4N 35 15CD