

ALSO SEE SURVEYS Q-0701-B, Q-0702-B, 02-012-C, 03-023-C, 97-141-C, Q-1122-C, CORNER RECORDS; G.L.O. SURVEYS; REDFIELD SURVEYS (SECTION 36)

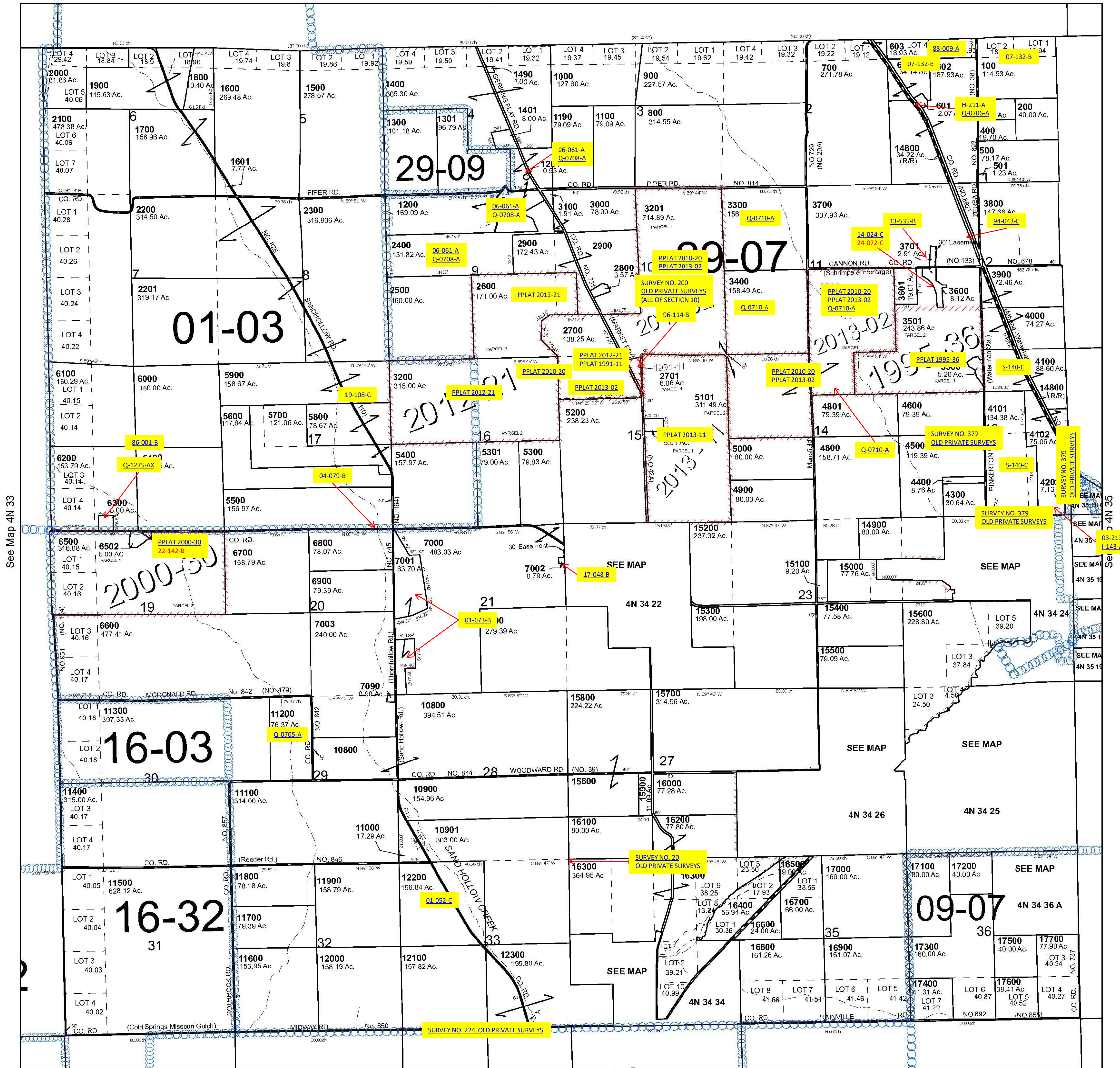
This map was prepared for Assessment & Taxation purposes only and was NOT prepared nor is it suitable for legal, engineering or surveying purposes.

T4N R34E WM UMATILLA COUNTY SCALE 1" = 2,000'

4N 34

Cancelled Tax Lots	7600	8301	9100	9801	13000
3400	5400	7600	8301	9100	9801
3702	5500	7602	8390	9200	9900
3801	5501	7700	8400-8402	9201	10000-10200
3900-3902	5600	7800	8500	9300-9302	10300
4000	6801	7900	8600	9400-9402	10301
4200	7200	8000	8700	9500	10400-10700
4201	7300	8100-8105	8800-8803	9600	10901
4400	7400-7402	8160	8900	9601	12400-12800
4500	7500	8200	9000	9700-9702	12900
4700	7501	8300	9001	9800	12901

See Map 5N 34



See Map 4N 33

Revised 1/13/2025

See Map 3N 34

4N 34