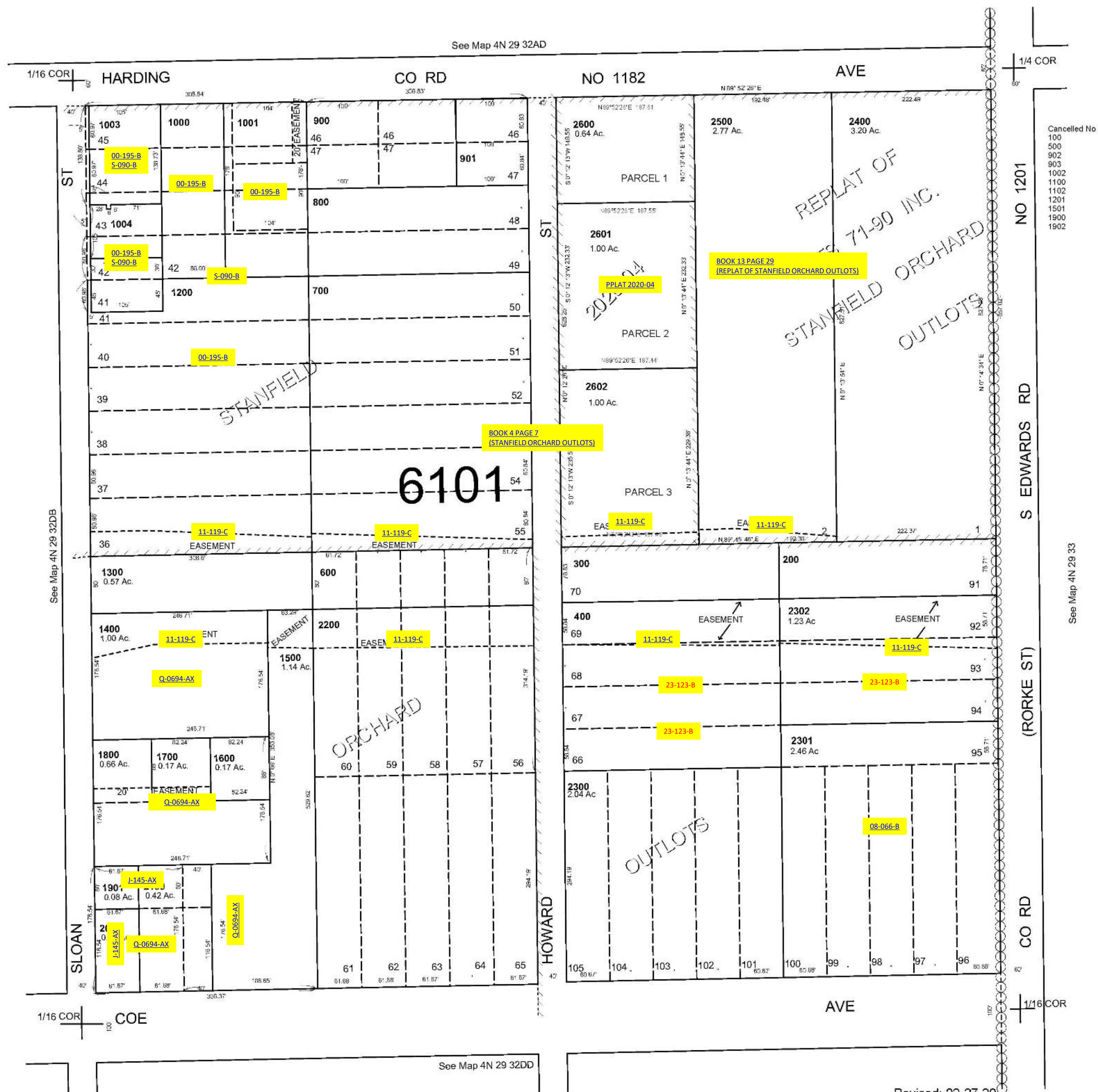


ALSO SEE SURVEYS 03-279-B, 05-085-B, Q-0045-B

This map was prepared for Assessment & Taxation purposes only and was NOT prepared nor is it suitable for legal, engineering or surveying purposes.

NE1/4 SE1/4 T4N R29E WM
UMATILLA COUNTY
1"=100'

4N 29 32DA
AERIAL PHOTO NO. NZ 2P-44



Cancelled No
100
500
900
1002
1100
1102
1201
1501
1900
1902

See Map 4N 29 33

Revised: 02-27-20

4N 29 32DA