

This map was prepared for Assessment & Taxation purposes only and was NOT prepared nor is it suitable for legal, engineering or surveying purposes.

Cancelled Tax Lots

- 501
- 1601
- 2900
- 3200

NW 1/4 SW 1/4 SEC 32 T4N R29E WM

UMATILLA COUNTY

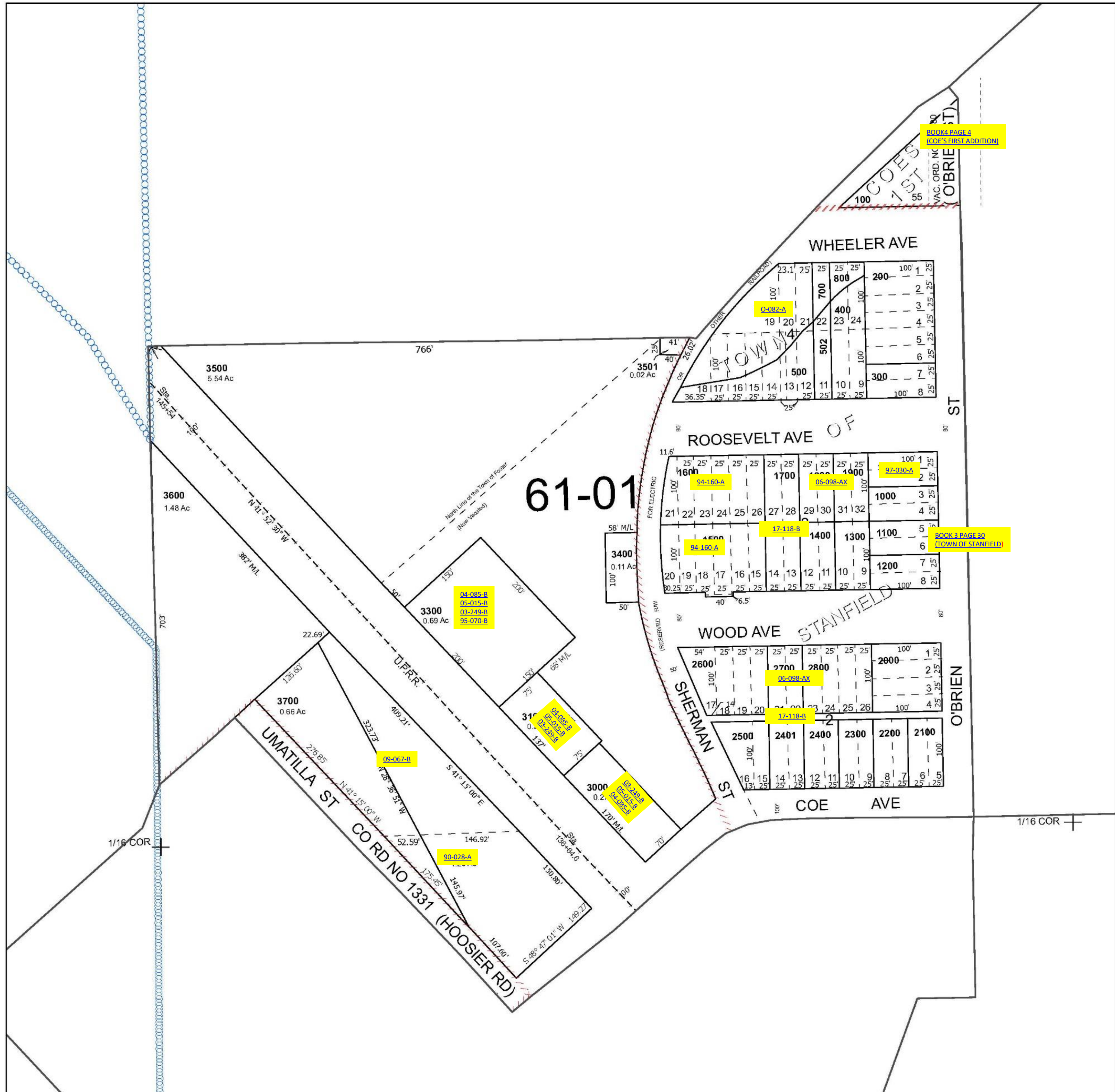
SCALE 1" = 100'

Stanfield

4N 29 32CB

See Map 4N 29 32B

See Map 4N 29 31



See Map 4N 29 32C

4N 29 32CB