

ALSO SEE SURVEYS 03-279-B, 05-085-B, 13-165-B, Q-0045-B, 11-038-C, 95-060-B, 98-155-C; SURVEY NO. 233, OLD PRIVATE SURVEYS; CORNER RECORDS; G.L.O. SURVEYS

This map was prepared for Assessment & Taxation purposes only and was NOT prepared nor is it suitable for legal, engineering or surveying purposes.

SEC 32 T4N R29E WM UMATILLA COUNTY

4N 29 32

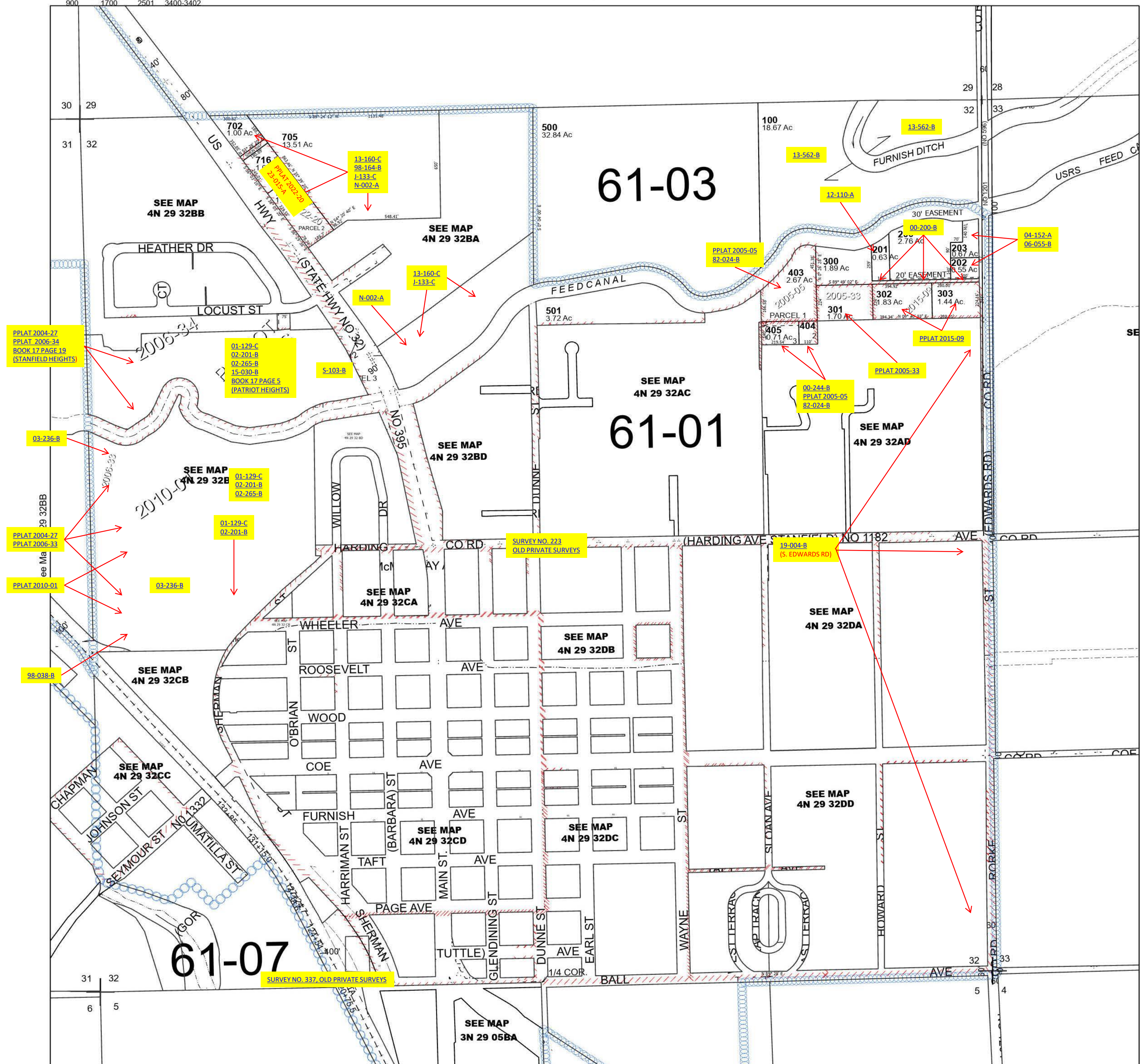
SCALE 1" = 400'

Stanfield

Cancelled Tax Lots

400-402	901	1800	2600	3500
600	1000-1006	1900-1902	2700	3600
601	1100-1104	2000-2005	2800	3700
700	1200	2100	2900	3800
701	1300	2200	2901	3900
706-715	1301	2300	3000-3004	4000-4005
717	1400	2301	3100	
718	1500	2400	3200	
800	1600-1618	2500	3300	
900	1700	2501	3400-3402	

See Map 4N 29 29



See Map 4N 29 33

Revised 5/23/2023

See Map 4N 29 32AB

4N 29 32