

This map was prepared for Assessment & Taxation purposes only and was NOT prepared nor is it suitable for legal, engineering or surveying purposes.

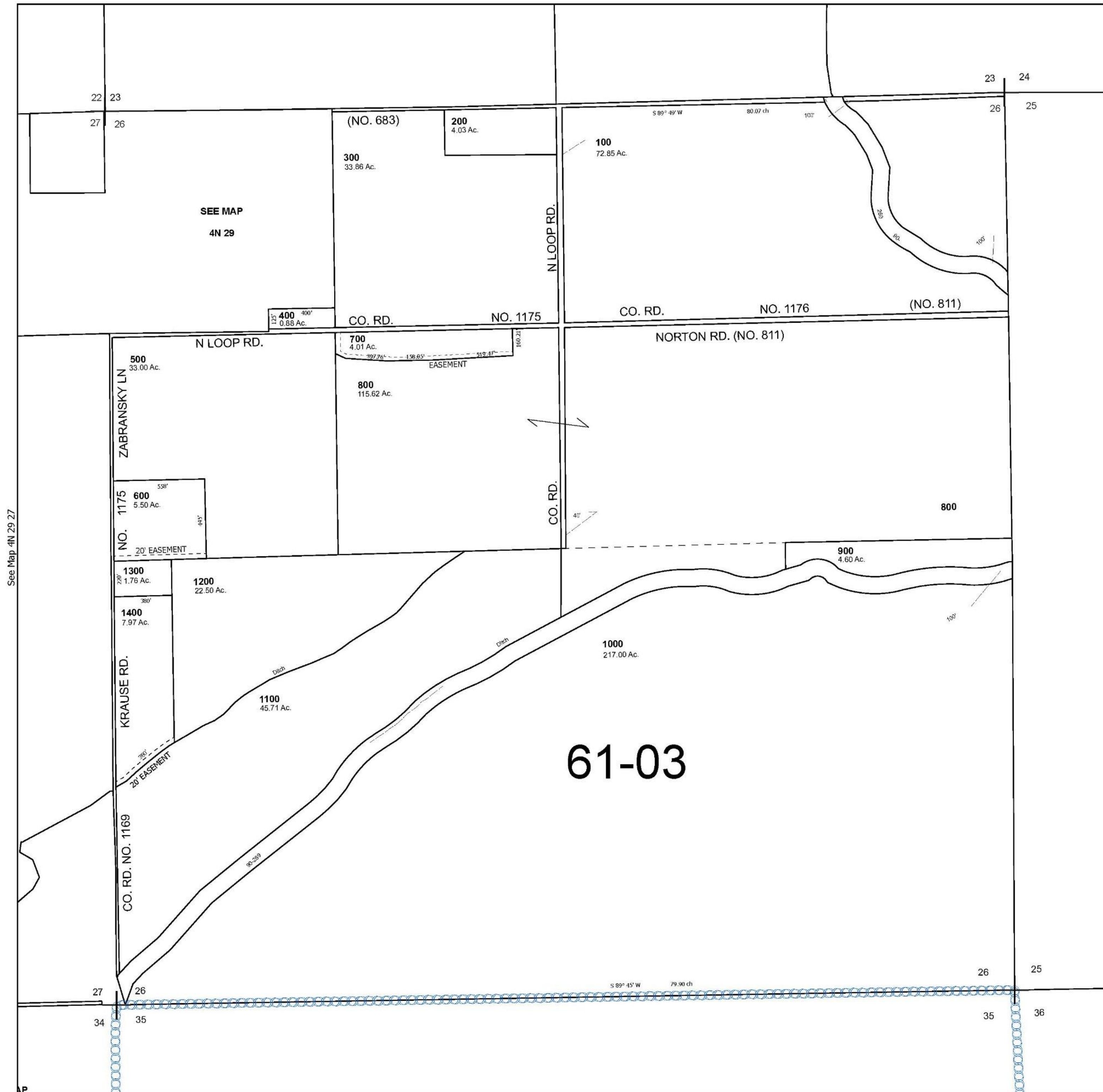
Cancelled Tax Lots

SEC 26 T4N R29E WM UMATILLA COUNTY

4N 29 26

SCALE 1" = 400'

See Map 4N 29 23



See Map 4N 29 27

See Map 4N 29 25

Revised 2/4/2025

See Map 4N 29

4N 29 26