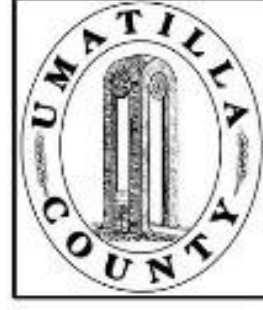


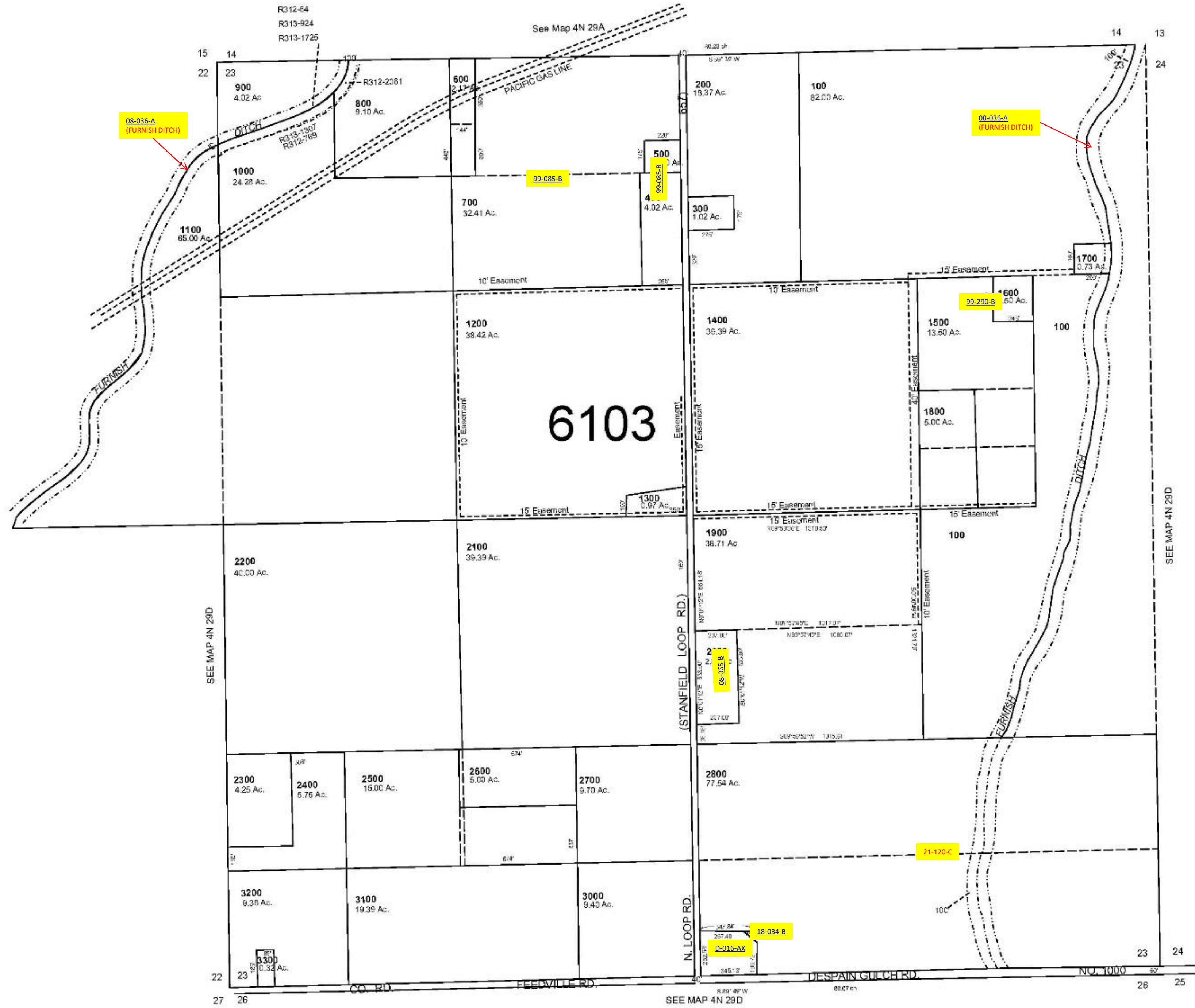
This map was prepared for Assessment & Taxation purposes only and was NOT prepared nor is it suitable for legal, engineering or surveying purposes.



SEC. 23 T4N R29E WM UMATILLA COUNTY

SCALE: 1" = 400'

4N 29 23
AERIAL PHOTO NO. NZ-2P 15-17 & 40-50



Revised: 06-05-18

4N 29 23