

This map was prepared for Assessment & Taxation purposes only and was NOT prepared nor is it suitable for legal, engineering or surveying purposes.

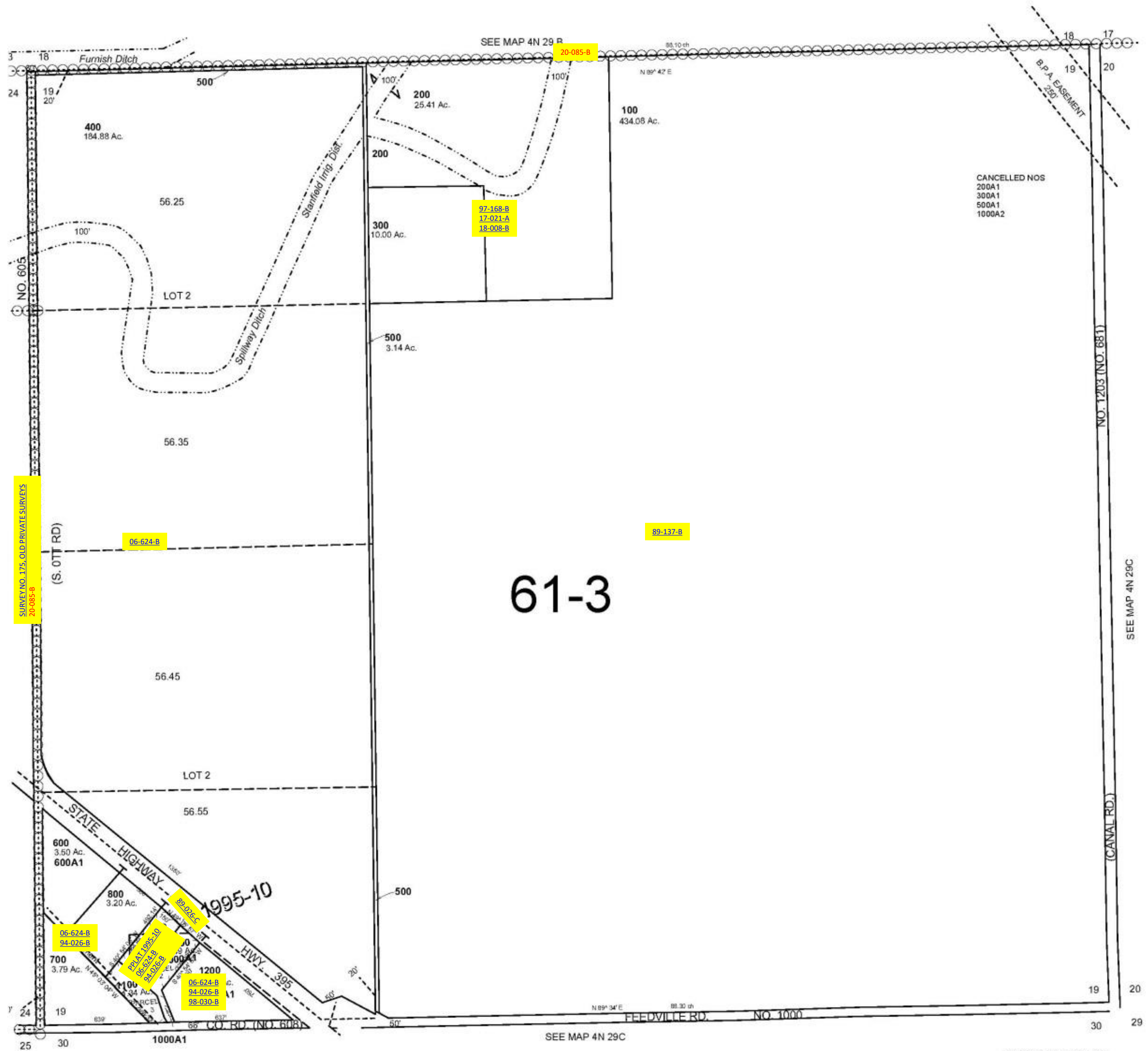


SEC 19 T4N R29E WM UMATILLA COUNTY

SCALE: 1" = 400'

4N 29 19

AERIAL PHOTO NO. NZ-2P 18-20 & 43-46



CANCELLED NOS
200A1
300A1
500A1
1000A2

61-3

REVISED: 8/22/12

4N 29 19