

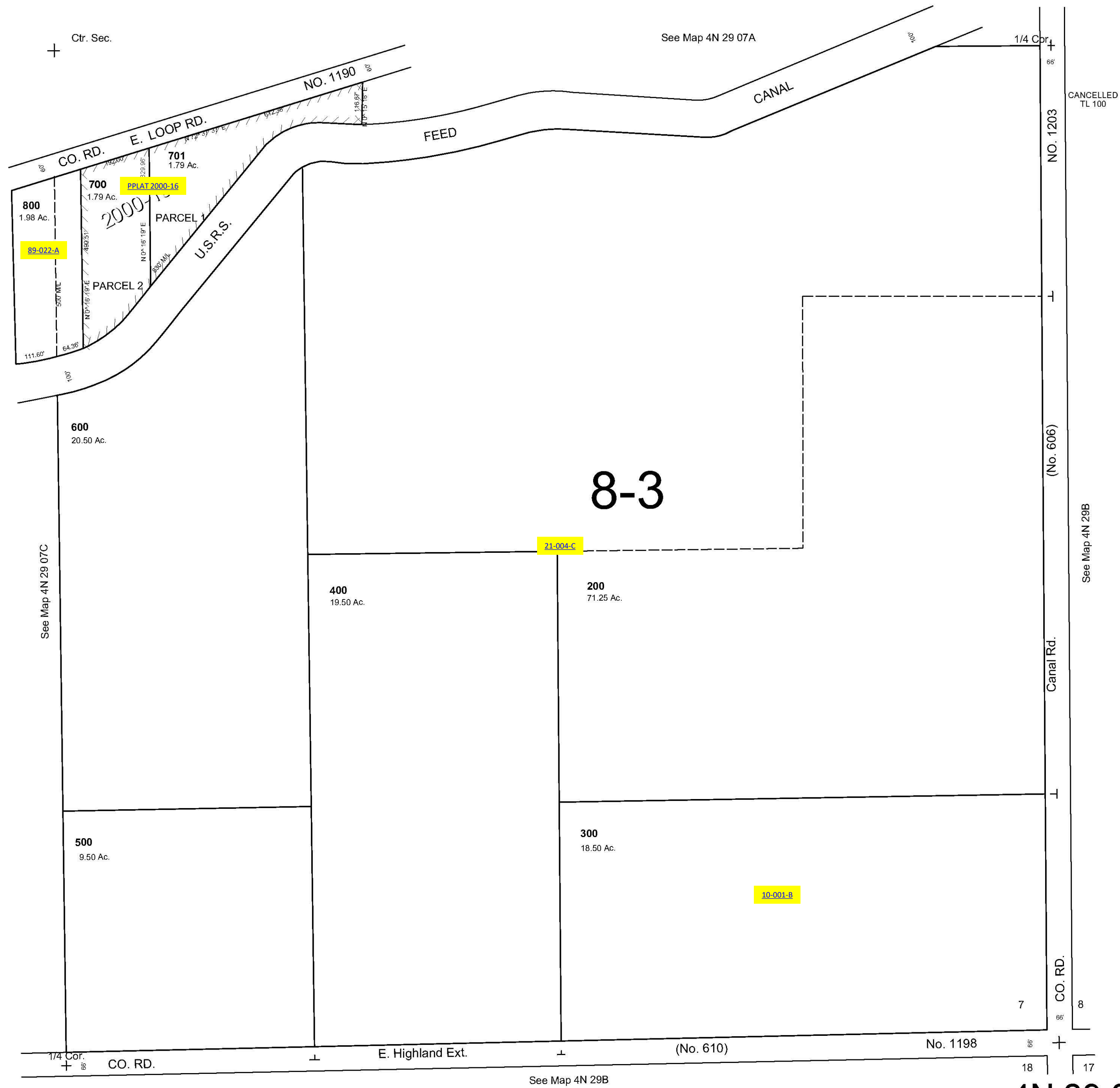
ALSO SEE SURVEYS 07-074-C, 95-059-B; SURVEY NO. 233, OLD PRIVATE SURVEYS; CORNER RECORDS; G.L.O. SURVEYS

This map was prepared
for assessment purposes

SE1/4 SEC 7 T4N R29E WM
UMATILLA COUNTY
SCALE 1"=200'

9/19/06

4N 29 07D
AERIAL PHOTO NO., 1P-125



4N 29 07D