

This map was prepared for Assessment & Taxation purposes only and was NOT prepared nor is it suitable for legal, engineering or surveying purposes.

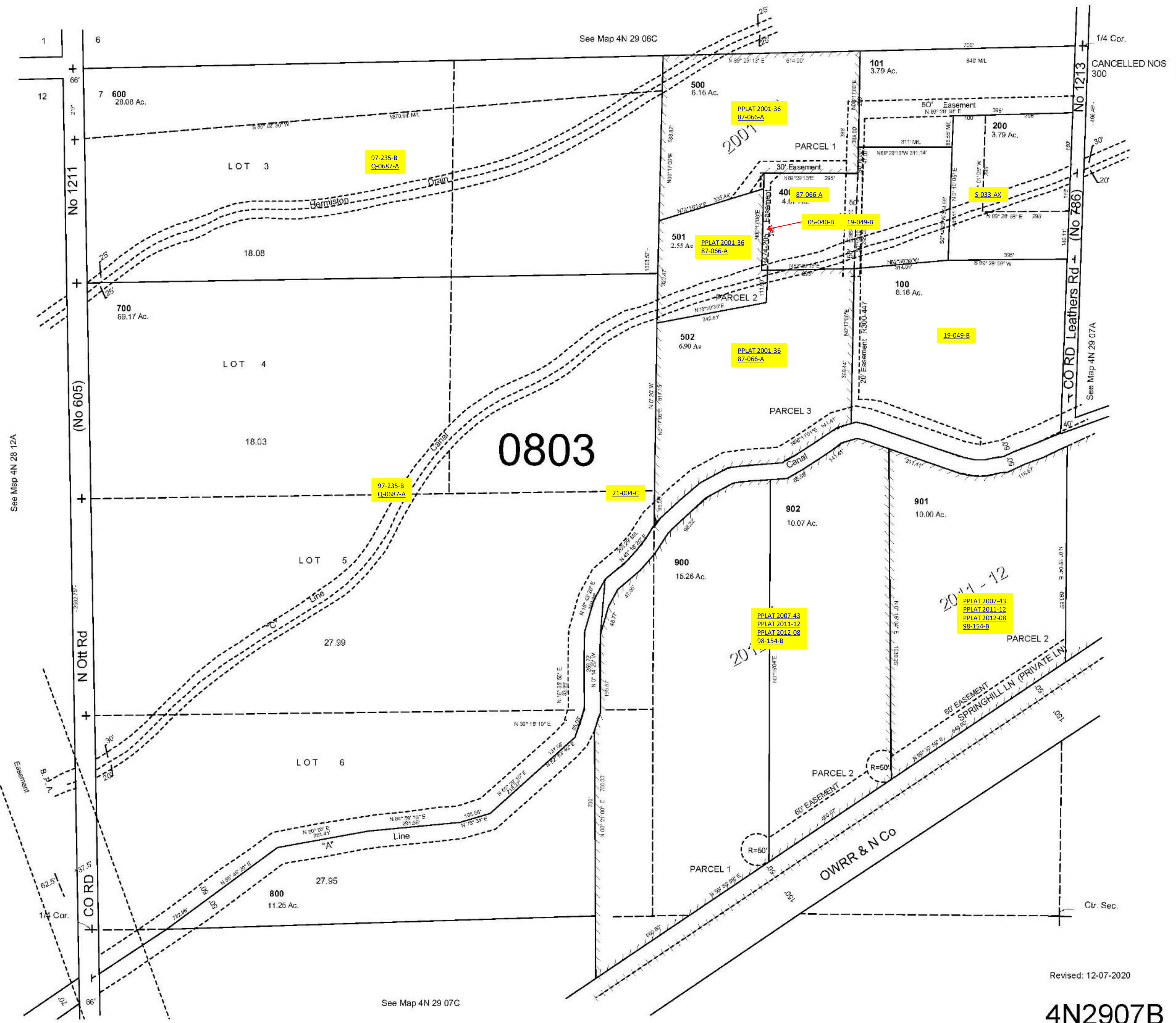


NW1/4 SEC 7 T 4N R 29 E WM UMATILLA COUNTY

SCALE: 1" = 200'

4N2907B

AERIAL PHOTO NO NZ 1P-125



Revised: 12-07-2020

4N2907B