

ALSO SEE SURVEYS O-084-A, 07-074-C, 95-059-B; SURVEY NO. 233, OLD PRIVATE SURVEYS; CORNER RECORDS; G.L.O. SURVEYS

This map was prepared for Assessment & Taxation purposes only and was NOT prepared nor is it suitable for legal, engineering or surveying purposes.

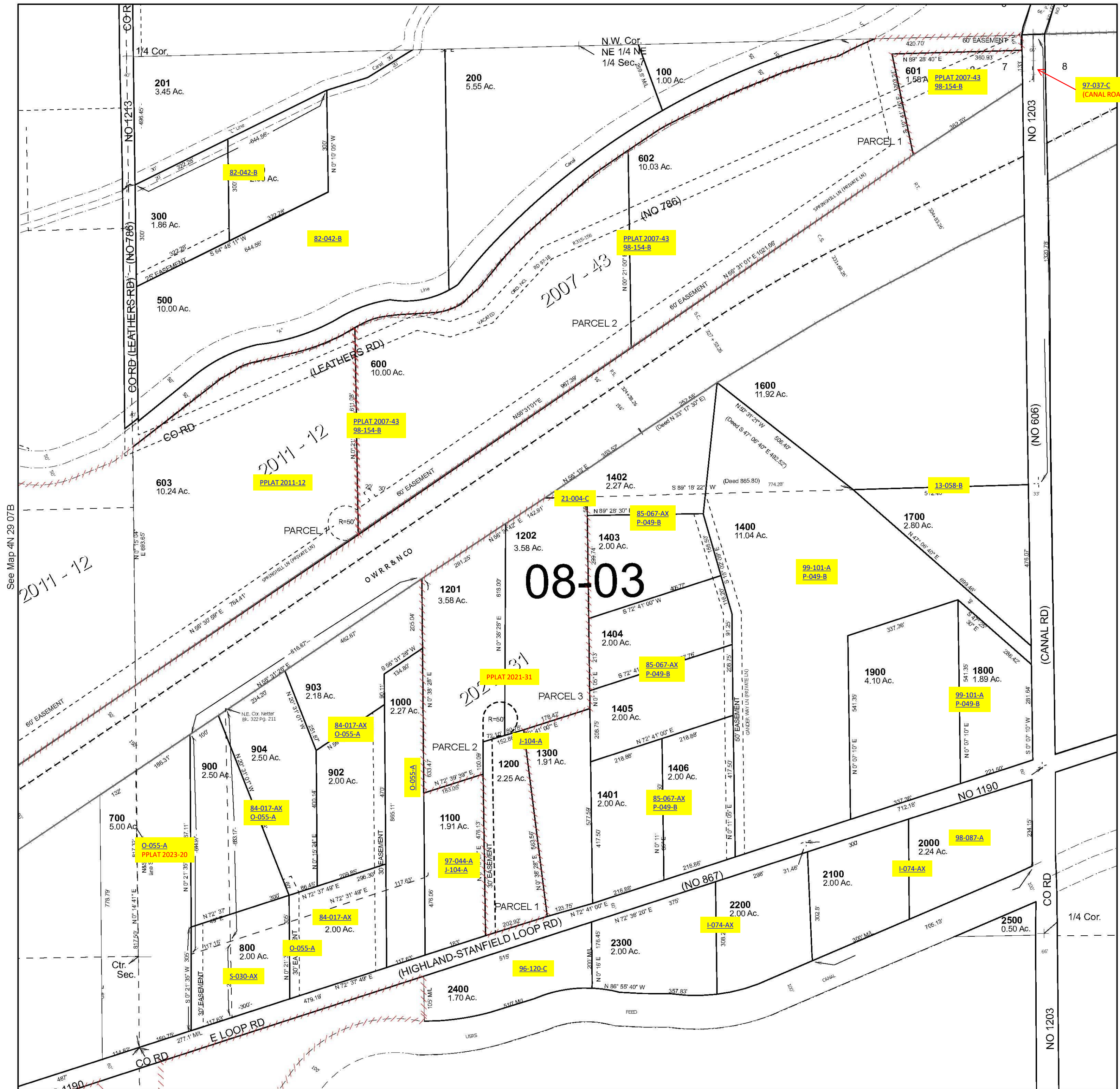
Cancelled Tax Lots
1500

NE 1/4 SEC 07 T4N R29E WM UMATILLA COUNTY

4N 29 07A

SCALE 1" = 200'

See Map 4N 29 06D



See Map 4N 29 07B

See Map 4N 29 08

Revised 1/4/2023

See Map 4N 29 07D

4N 29 07A