

ALSO SEE SURVEYS 07-074-C, 95-059-B; SURVEYS NO. 233 & 304, OLD PRIVATE SURVEYS; CORNER RECORDS; G.L.O. SURVEYS

This map was prepared for Assessment & Taxation purposes only and was NOT prepared nor is it suitable for legal, engineering or surveying purposes.

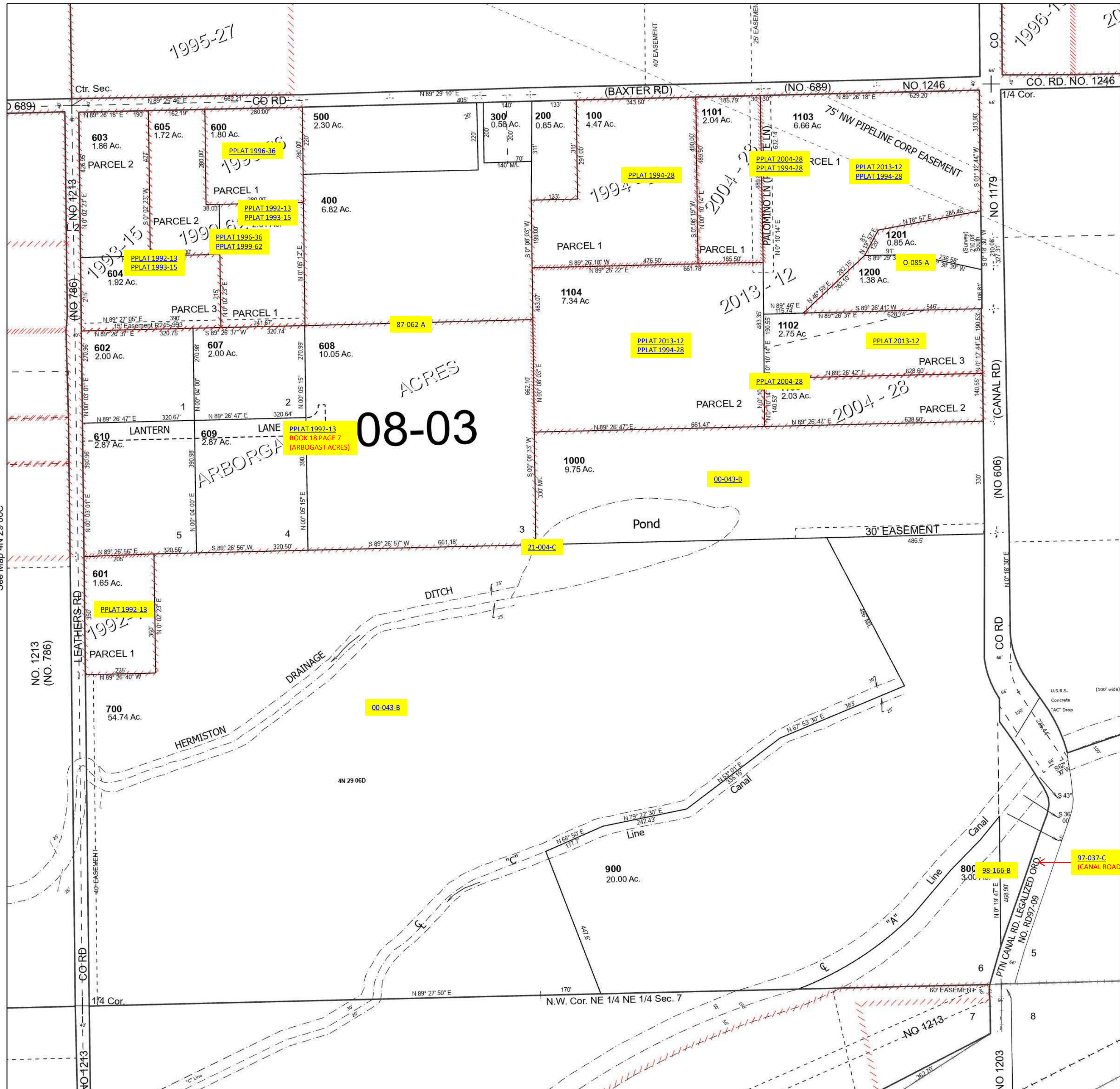
Cancelled Tax Lots

SE 1/4 SEC 06 T4N R29E WM UMATILLA COUNTY

SCALE 1" = 200'

4N 29 06D

See Map 4N 29 06A



See Map 4N 29 06C

See Map 4N 29 05C

Revised 7/14/2023

See Map 4N 29 07A

4N 29 06D