

This map was prepared for Assessment & Taxation purposes only and was NOT prepared nor is it suitable for legal, engineering or surveying purposes.

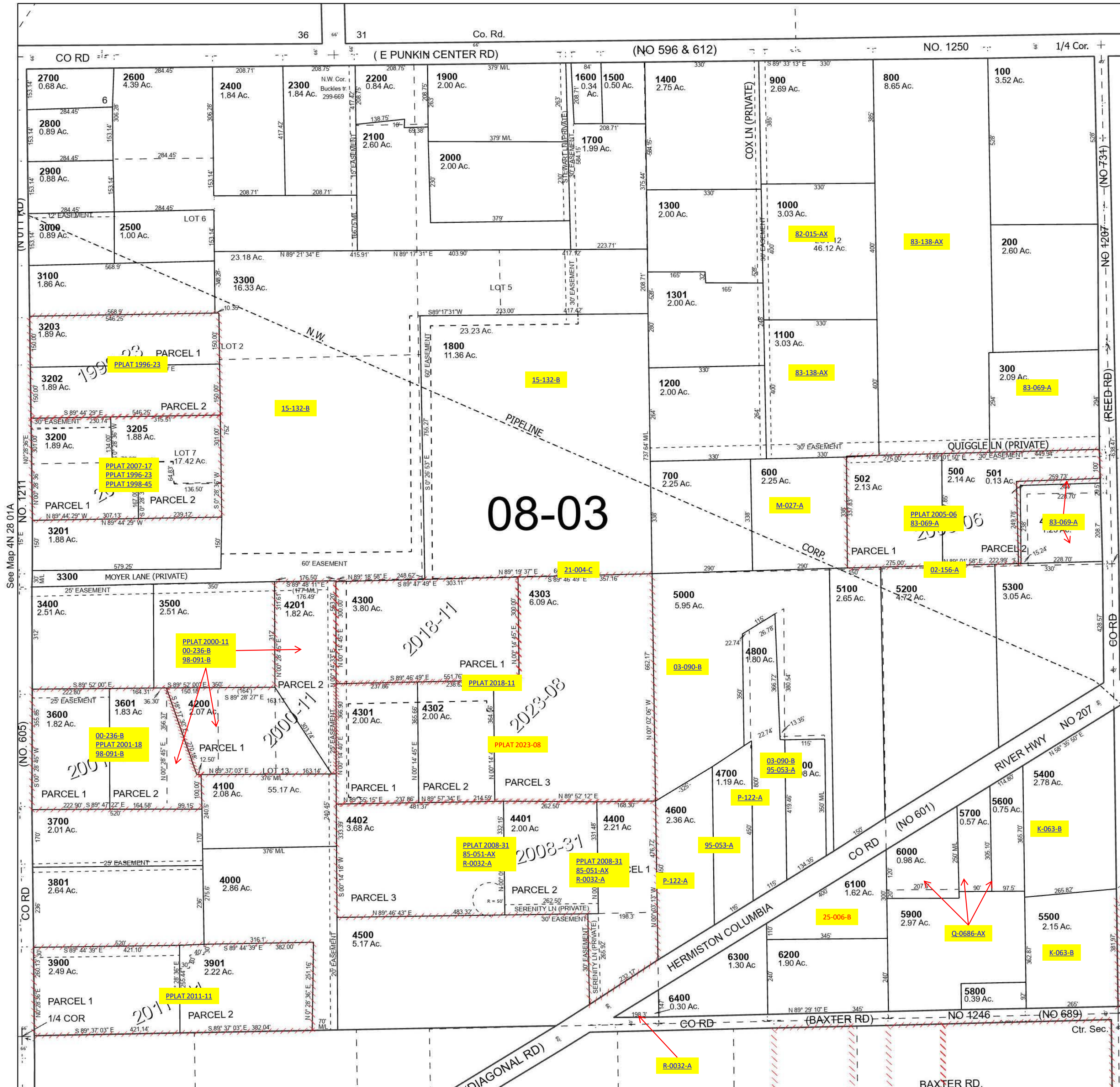
Cancelled Tax Lots
2601
3204
3301
3302
3800

NW 1/4 SEC 06 T4N R29E WM UMATILLA COUNTY

4N 29 06B

SCALE 1" = 200'

See Map 5N 29 31C



Revised 7/14/2023

See Map 4N 29 06C

4N 29 06B