

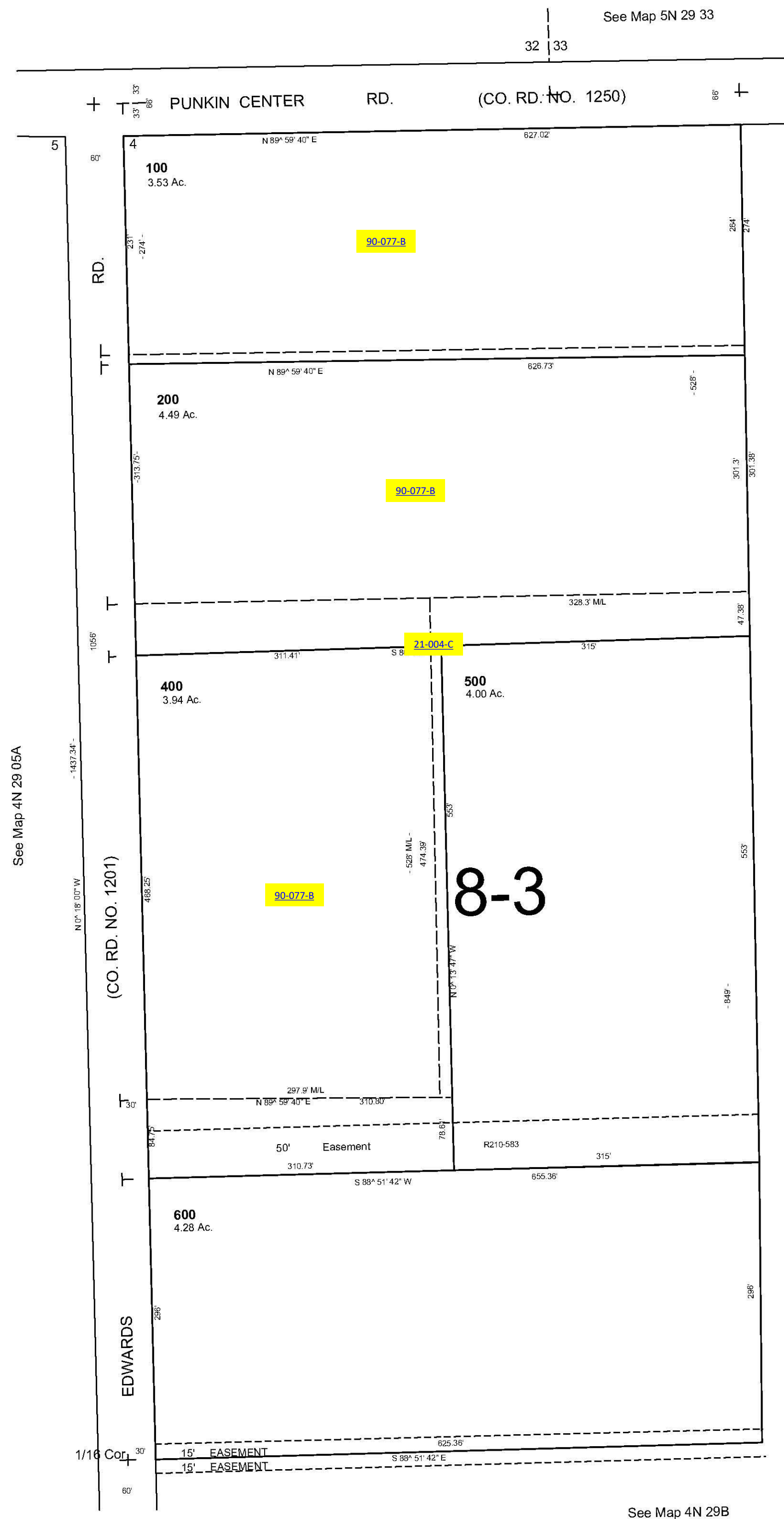
This map was prepared for assessment purposes

SCALE 1"=100'

NW1/4 NW1/4 SEC 4 T4N R29E WM UMATILLA COUNTY

9/19/06

4N 29 04BB



See Map 5N 29 33

32 33

CANCELLED
TL 300

See Map 4N 29 05A

See Map 4N 29B

See Map 4N 29B

4N 29 04BB