

ALSO SEE SURVEYS 13-015-C, N-011-A, P-062-C, Q-0697-C, Q-1506-AX, 02-160-B, 03-054-C, 07-074-C, 94-171-G; CORNER RECORDS; G.L.O. SURVEYS

This map was prepared for Assessment & Taxation purposes only and was NOT prepared nor is it suitable for legal, engineering or surveying purposes.

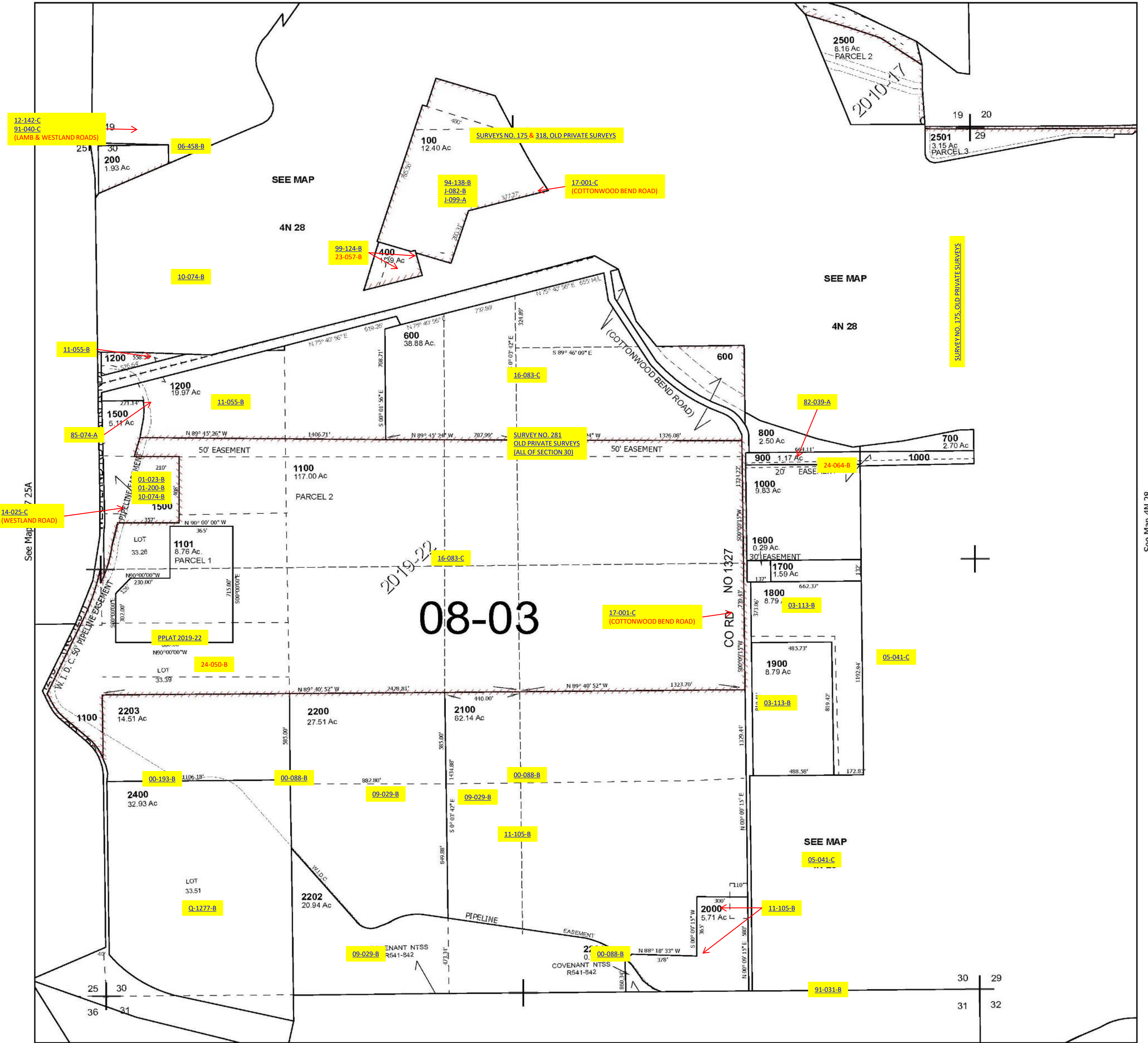
SEC 30 T4N R28E WM UMATILLA COUNTY

4N 28 30

Cancelled Tax Lots
300
500
1300
1400

SCALE 1" = 400'

See Map 4N 28



Revised 1/13/2025

See Map 4N 28 31

4N 28 30