

ALSO SEE SURVEYS 82-058-B, 92-045-C, 94-171-G, M-079-C, S-156-C; CORNER RECORDS; G.L.O. SURVEYS

This map was prepared for Assessment & Taxation purposes only and was NOT prepared nor is it suitable for legal, engineering or surveying purposes.

Cancelled Tax Lots

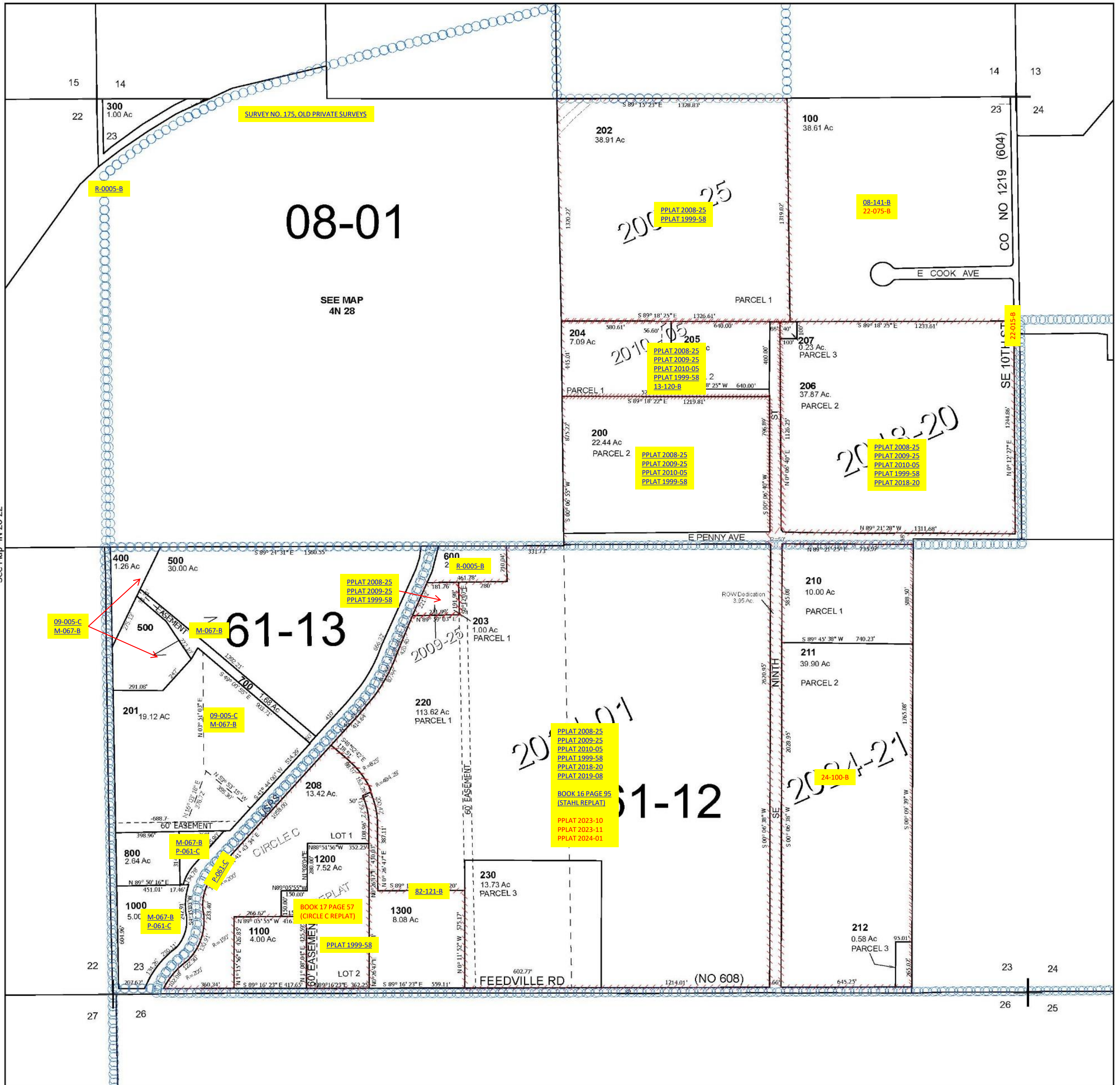
SEC 23 T4N R28E WM UMATILLA COUNTY

SCALE 1" = 400'

4N 28 23

Hermiston

See Map 4N 28 14D



See Map 4N 28 22

See Map 4N 28 24B

Revised 1/13/2025

See Map 4N 28

4N 28 23