

ALSO SEE SURVEYS 06-436-A, 15-006-C, Q-1330-A, 07-074-C, 09-039-A, 09-173-B, 92-045-C, 94-171-G, S-156-C; CORNER RECORDS; G.L.O. SURVEYS

This map was prepared for Assessment & Taxation purposes only and was NOT prepared nor is it suitable for legal, engineering or surveying purposes.

NE 1/4 SEC 21 T4N R28E WM UMATILLA COUNTY

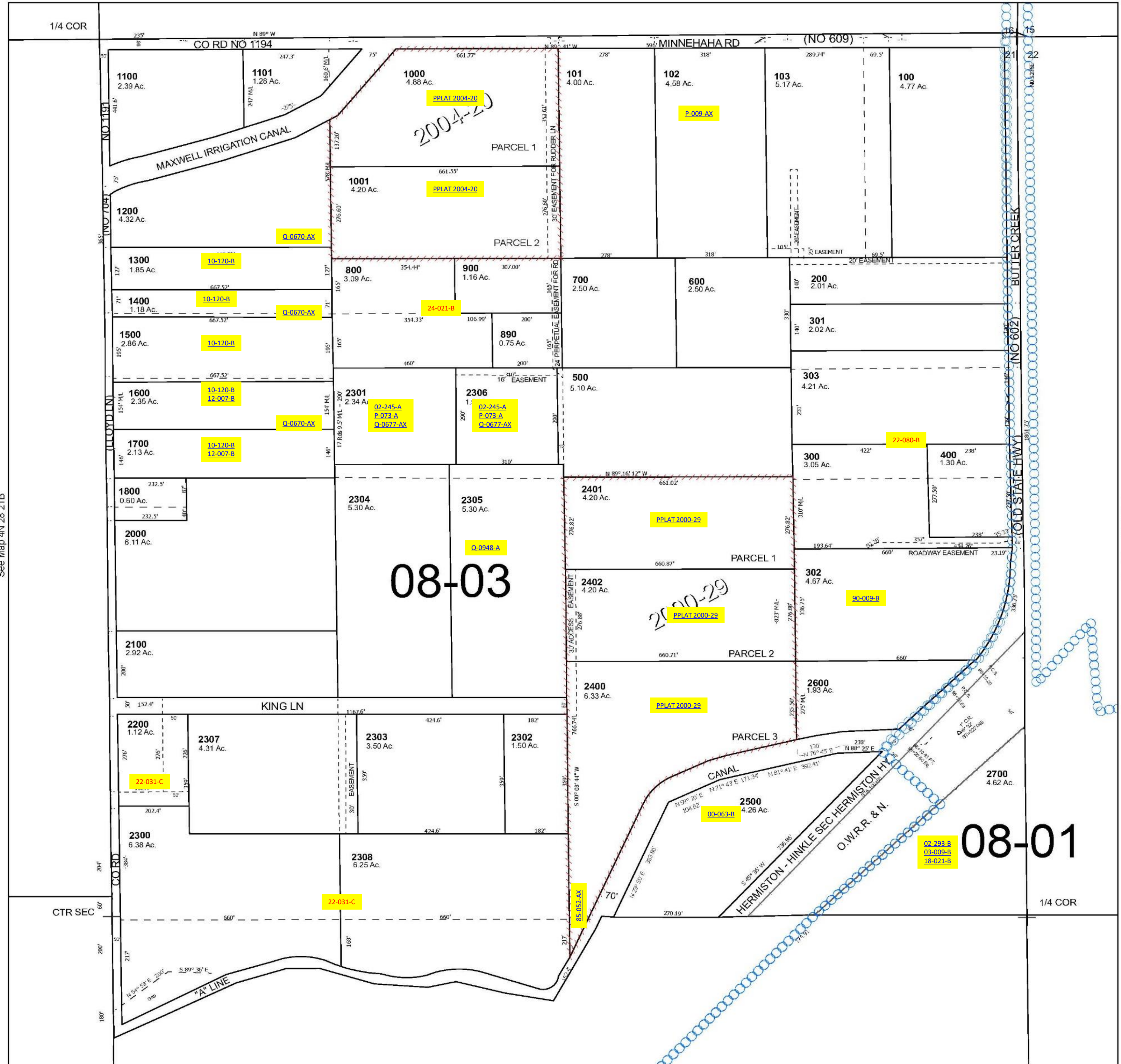
SCALE 1" = 200'

4N 28 21A

Hermiston

Cancelled Tax Lots
104
1900
2201
2309
2310
2311

See Map 4N 28 16D



See Map 4N 28 21B

See Map 4N 28 22B

Revised 12/18/2024

See Map 4N 28 21D

4N 28 21A