

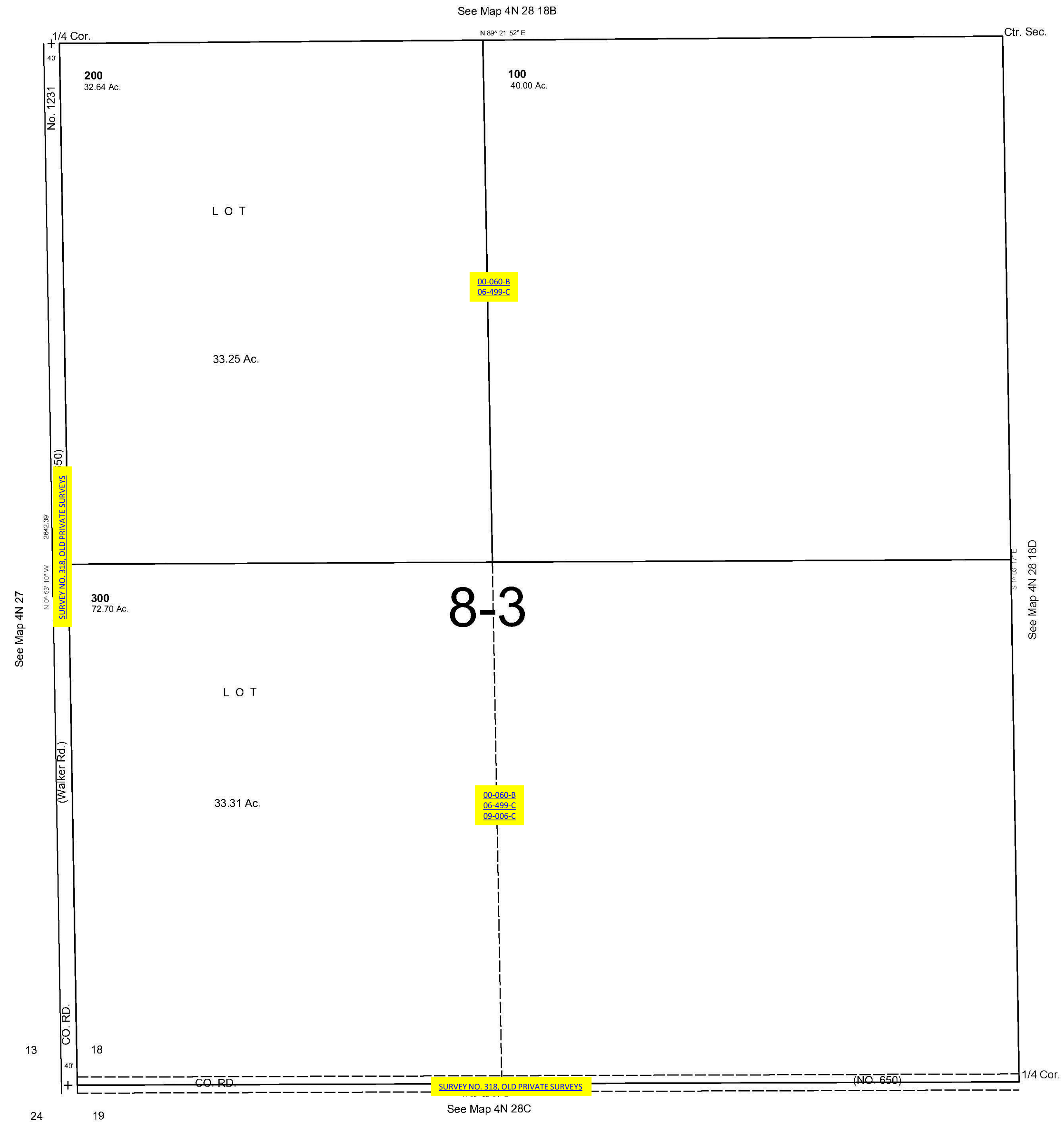
ALSO SEE SURVEYS 03-054-C, H-142-B; CORNER RECORDS; G.L.O. SURVEYS

This map was prepared
for assessment purposes

SW1/4 SEC 18 T4N R28E WM
UMATILLA COUNTY
SCALE 1"=200'

9/18/06

4N 28 18C



4N 28 18C